

WHATCOM UNIFIED SITUATION REPORT



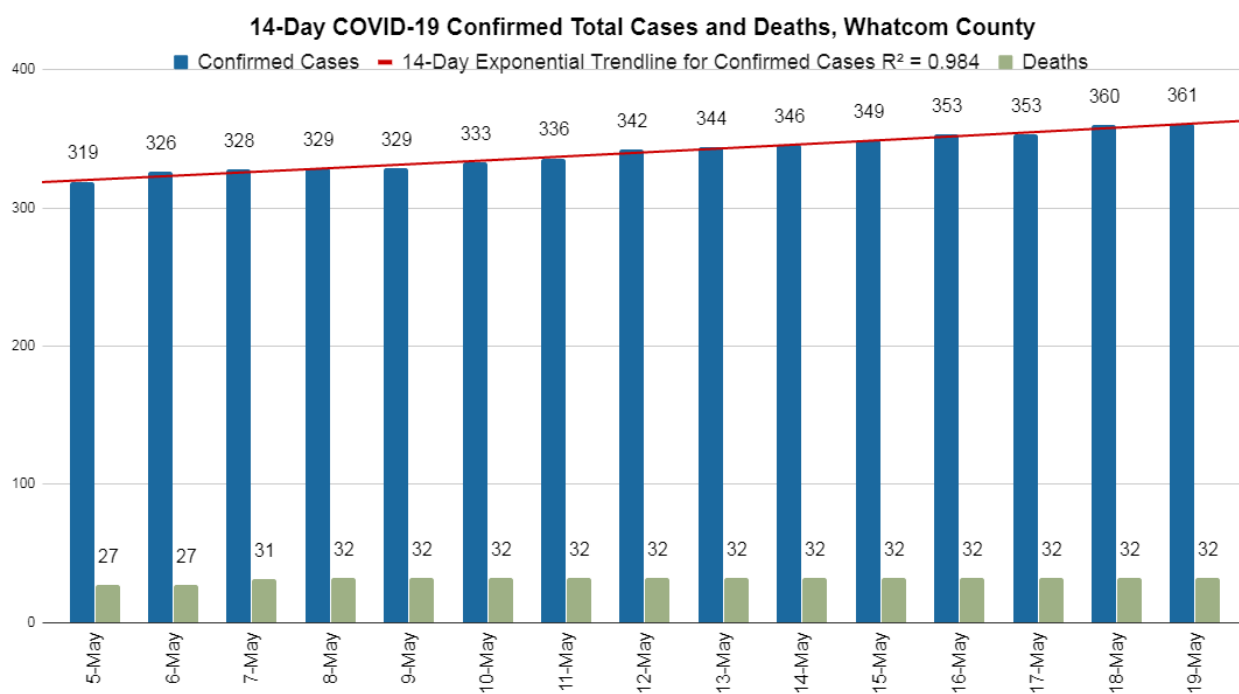
| | | |
|---------------------------|------------------------|-------------------------|
| REPORT #: 20200519.1 | DATE: 5/19/2020 | TIME: 16:00 |
| INCIDENT NAME: COVID-2019 | OPERATIONAL PERIOD: 12 | MISSION NUMBER: 20-0265 |

WHATCOM UNIFIED INCIDENT COMMAND STATUS

| | | |
|---|-------------------------------|--------------------------------------|
| ACTIVATION: Whatcom Unified Emergency Command Center | ACTIVATION STATUS: Partial | HOURS OF OPERATION: 8am – 4:30 pm |
|---|-------------------------------|--------------------------------------|

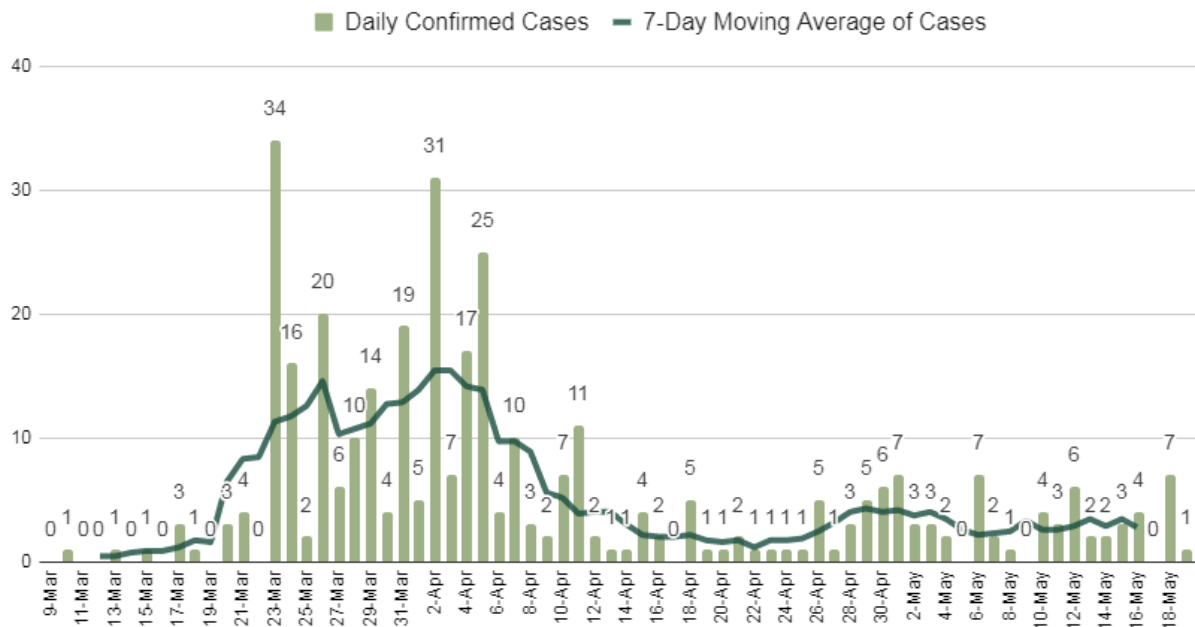
GENERAL SITUATION

ICS 202

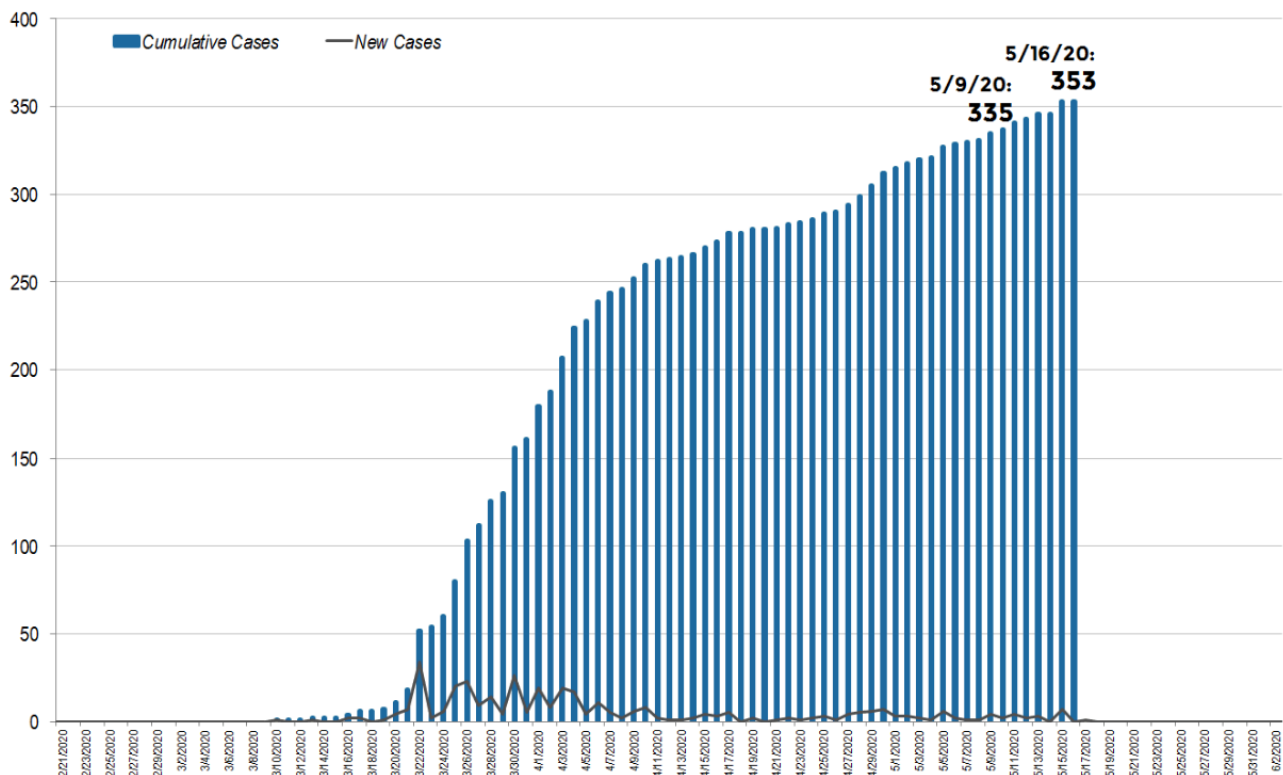


| DATE | CONFIRMED CASES | DEATHS |
|------------|-----------------|--------|
| 05/19/2020 | 361 | 32 |
| 05/18/2020 | 360 | 32 |
| 05/17/2020 | 353 | 32 |
| 05/16/2020 | 353 | 32 |
| 05/15/2020 | 349 | 32 |

COVID-19 Daily Confirmed Cases with 7-Day Moving Average, Whatcom County

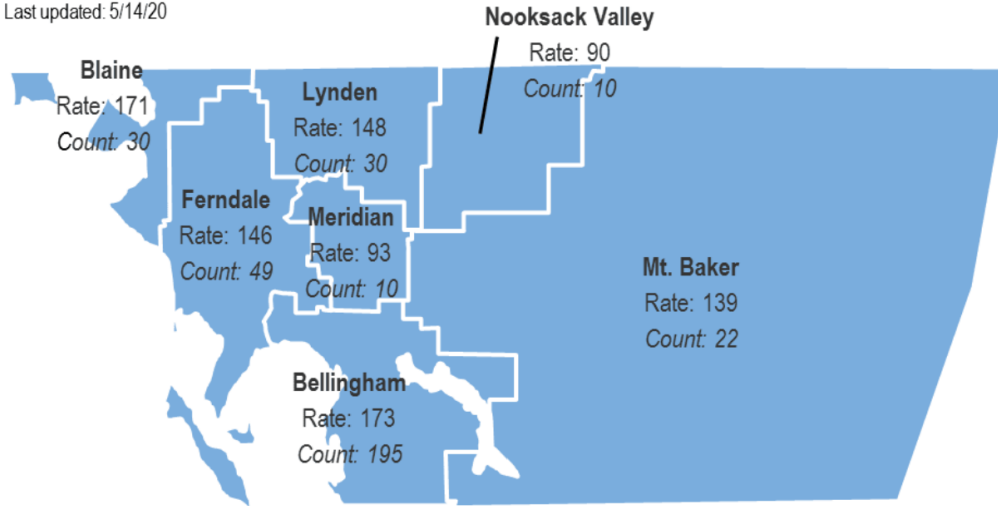


Cumulative Count of Confirmed COVID-19 Cases in Whatcom County, by Day



Confirmed Cases of COVID-19 in Whatcom County, by School District

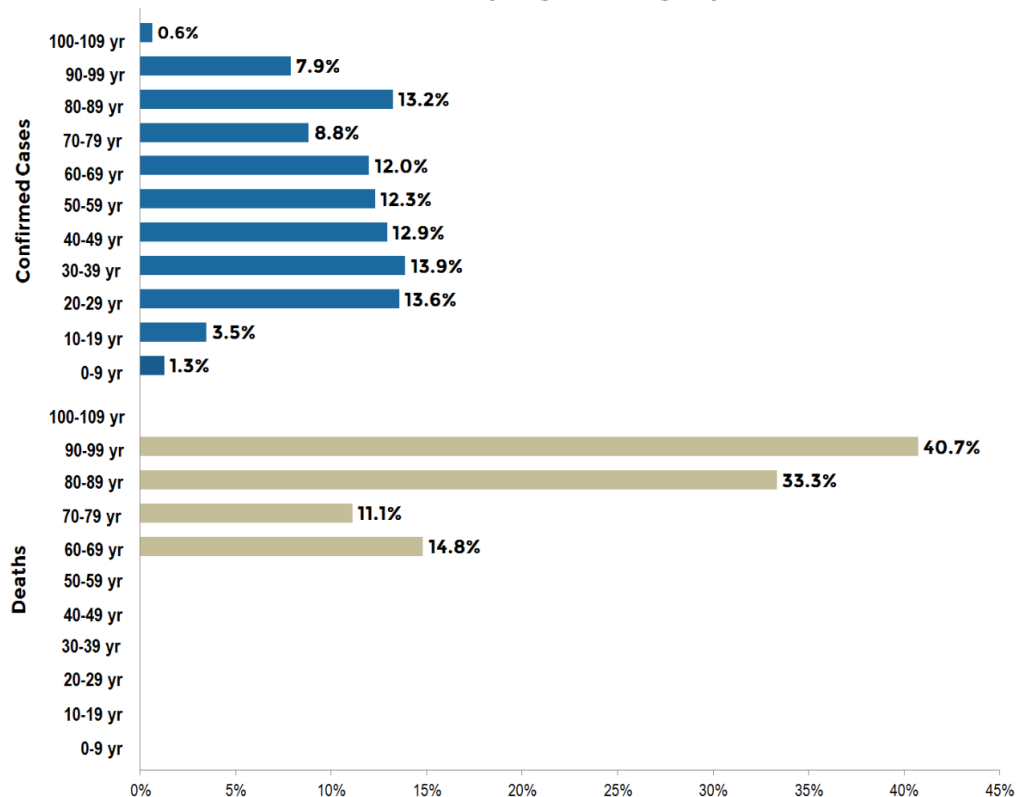
Last updated: 5/14/20



Rate: Confirmed cases of COVID-19 per 100,000 residents

Count: Cumulative cases of COVID-19

Confirmed Cases And Deaths, By Age Category



*Source: Whatcom County Health Department

INTELLIGENCE REPORT

PeaceHealth St. Joseph Medical Center data will be updated on Wednesdays and Fridays due to delay in reporting. Next update will be on May 20, 2020.

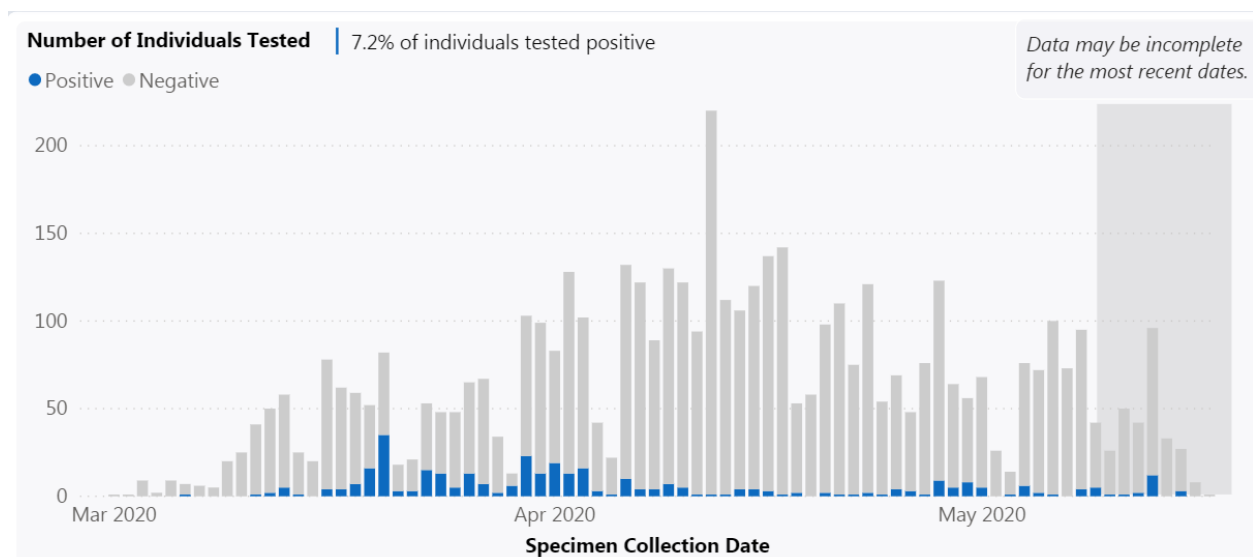
| PeaceHealth St. Joseph Medical Center | 05/14/20 | 05/13/20 | 05/12/20 | 05/11/20 | 05/10/20 |
|---------------------------------------|----------|----------|----------|----------|----------|
| Total Beds | 232 | 232 | 232 | 232 | 232 |
| Total Patients Admitted | 165 | 167 | 166 | 162 | 162 |
| Total Beds Available | 67 | 65 | 66 | 70 | 70 |
| Total Ventilators Available | 43 | 43 | 43 | 43 | 43 |

**Note: Capability to expand to 241 beds as needed.*

***Source: PeaceHealth St. Joseph Medical Center and Washington State Hospital Association as of May 15, 2020 at 12:30 p.m.*

****PeaceHealth St. Joseph Medical Center is one of multiple facilities that monitor and treat confirmed and/or suspected COVID cases in the County.*

WHATCOM COUNTY-NUMBER OF INDIVIDUALS TESTED

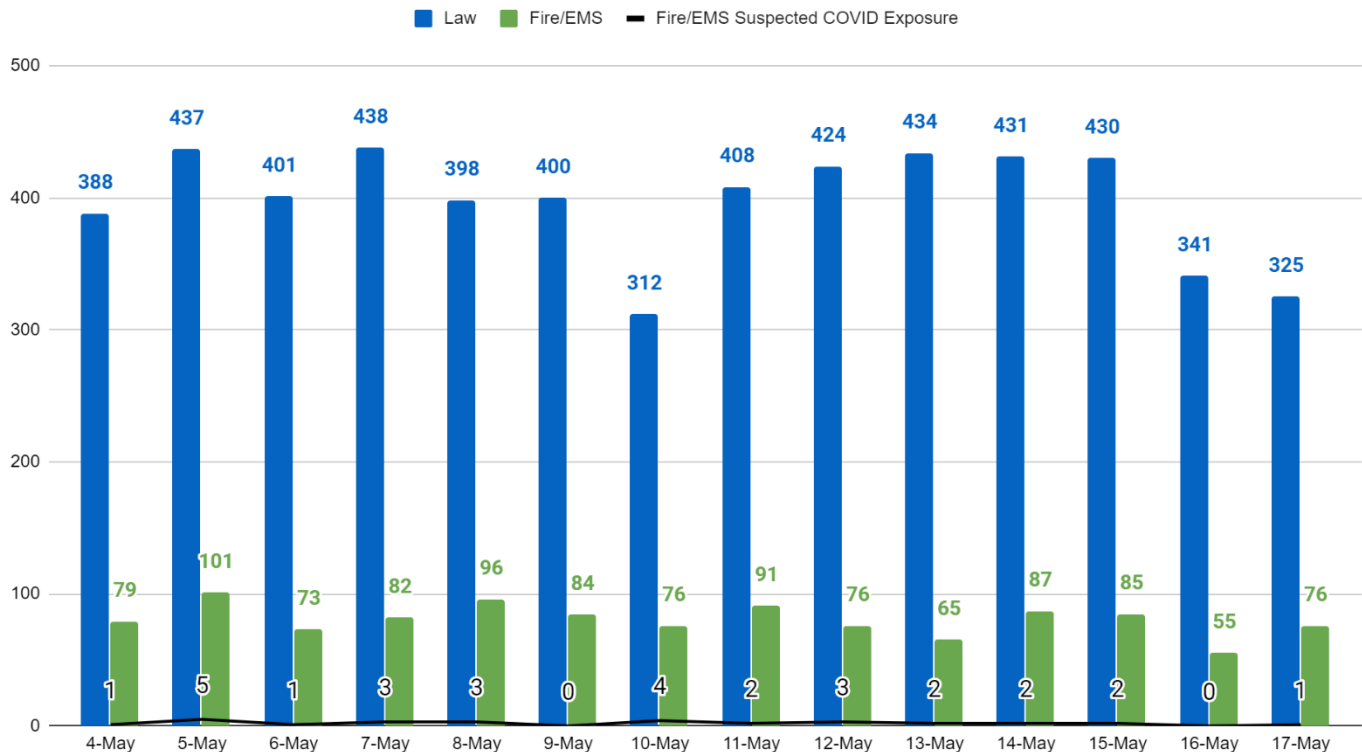


**Whatcom County data as of May 17, 2020 11:59 PM*

***Source: Washington State Department of Health*

<https://www.doh.wa.gov/Emergencies/NovelCoronavirusOutbreak2020COVID19/DataDashboard>

14-Day 911 Calls for Law and Fire/EMS with Fire/EMS Suspected COVID Exposure, Whatcom County



*Note: A single incident can generate multiple 911 calls and incidents can occur without a 911 call.

**Source: Whatcom County EMS; data as of May 18, 2020

COMMUNICATIONS

Incident Objective 6: Keep the public, stakeholders, and the media informed of response activities.

The Whatcom Unified Command **Joint Information Center (JIC)** updates and maintains the Whatcom COVID-19 website as the central repository for the most up to date information regarding COVID-19 for Whatcom County residents. Updates are continually made to report on current health data, government recommendations and orders, and media coverage. All information has been verified to come from reputable sources. The JIC coordinates with partner agencies throughout the State to maintain consistency when reporting information.

Local Information (Coordinated through the JIC):

- WUC Whatcom COVID-19 website: <https://whatcomcovid.com/>
- Whatcom County Health Department website: <https://www.whatcomcounty.us/covid>
- Whatcom County News Flash: www.co.whatcom.wa.us
- [WUC Facebook](#)
- [WUC Twitter](#)
- [Whatcom County Health Department Facebook](#)

State and Federal Information

- Governor Inslee's Proclamations: <https://www.governor.wa.gov/office-governor/official-actions/proclamations>
- Washington State Department of Health provides guidance on wearing cloth face coverings

<https://www.doh.wa.gov/Portals/1/Documents/1600/coronavirus/ClothFacemasks.pdf>

- [Governor's phased approach](#)

JIC Updates

- WCHD Website (www.whatcomcounty.us/covid)
 - Updated case numbers
 - Updated guidance documents with new mask recommendations
 - Updated Masks page - 5/18
- Whatcom Unified Command website (www.whatcomcovid.com)
 - Updated Situation Report
- Social Media Posts
 - WCHD Facebook Updates
 - New Mask Directive (5/18/20)
 - How to Properly Wear Mask (5/18/20)
 - WUC Facebook Updates
 - Safe Start Guidance (5/19/20)
- Other
 - Ongoing conversations with media/reporters
 - Monitored both City and County Council meetings as the WUC IC addressed each body of elected officials.

State and Local

- Bellingham Herald: [Whatcom's drug, mental health court participants struggle due to coronavirus pandemic](#) - May 19, 2020
- Seattle Times: [Inslee announces dentists, doctors can reopen offices using guidance to prevent spread of coronavirus](#) - May 18, 2020
- Seattle Times: [Canada, US extend border closure to non-essential travel](#) - May 19, 2020
- My Northwest: [State AG Ferguson files lawsuit against gyms flouting stay-at-home order](#) - May 19, 2020

National

- NPR: [Treasury's Mnuchin, Fed's Powell Defend Coronavirus Relief Measures](#) - May 19, 2020
- NPR: [With Postmortem Testing, 'Last Responders' Shed Light On Pandemic's Spread](#) - May 19, 2020
- New York Times: [What to Know About the Malaria Drug Trump Says He Is Using](#) - May 19, 2020
- Route Fifty: [Two Coasts. One Virus. How New York Suffered Nearly 10 Times the Number of Deaths as California](#) - May 19, 2020

Upcoming and Continuing JIC Priorities

- Continue to prioritize messaging based on current Incident Objectives.
- Continue to work with Liaison to determine local COVID-19 call center needs and the best tool to address local phone inquiries.
- Continue to reinforce the importance of staying home and staying healthy for our community.
- Work with Liaison to develop a plan for distribution of communication materials for community groups.
- We are working on a more robust, strategic communications plan incorporating an equity focus throughout our messaging.
- Collect, summarize, and publish information about PPE distributed by WUC.
- Develop materials to explain planning process and communicate context of preparations.
- Greater outreach to farming communities.
- Help set expectations for progression of phased reopening.
- Communicate changes in Stay Home, Stay Healthy order as they are made public.

- Keep public updated on Public Health Advisory Board's Reopening Task Force.
- Publish Q&A video segments from local experts about Stay Home, Stay Healthy and transitioning through Governor Inslee's phased approach to re-openings.
- Provided further encouragement and direction on mask use and information about masks.

WHATCOM UNIFIED COMMAND INFORMATION

INCIDENT OBJECTIVES: Operational Period 12

1. Anticipate and develop plans to address potential second peak of COVID-19 infections.
2. Prevent and mitigate the spread of COVID-19.
3. Provide for the most vulnerable members of the community.
4. Ensure adequacy of First Responder/Healthcare personnel and equipment/supplies.
5. Enable continuity of Essential Services.
6. Keep the public, stakeholders and the media informed of response activities.
7. Manage a coordinated interagency response effort that reflects the makeup of Unified Command.

SOURCES & RELEVANT SITES

IAP Software

WADOH Daily Epi Report

WADOH Map: <https://www.arcgis.com/apps/opsdashboard/index.html#/3614241b1c2b4e519ae1cf52e2c3d560>

Whatcom County Health Department <http://www.whatcomcounty.us/3329/Novel-Coronavirus-COVID-19#case>

Whatcom County EMS

Washington State Hospital Association- Hospital Supply Tracker

Whatcom County Health Department Situation Reports

Washington: <https://www.doh.wa.gov/emergencies/coronavirus>

British Columbia: <https://www.canada.ca/en/public-health/services/diseases/2019-novel-coronavirus-infection.html>

Alaska: <http://dhss.alaska.gov/dph/Epi/id/Pages/COVID-19/monitoring.aspx>

California: <https://www.cdph.ca.gov/Programs/CID/DCDC/Pages/Immunization/ncov2019.aspx>

Hawaii: <https://hawaiiicovid19.com/>

Idaho: <https://coronavirus.idaho.gov/>

Oregon: <https://govstatus.egov.com/OR-OHA-COVID-19>

CDC <https://www.cdc.gov/coronavirus/2019-ncov/cases-updates/cases-in-us.html>

Global: <https://coronavirus.jhu.edu/map.html>

SECTION UPDATES

LOGISTICS

1. Continuing to provide support and supplies to Byron Avenue I/Q Facility.
2. Continuing to expand sourcing options for PPE and connecting customers directly to distributors where feasible.
3. Developed and utilizing tool to project future PPE needs for first responders.

OPERATIONS

1. Continuing operations of the Byron Avenue I/Q Facility with the admittance of community members needing isolation/quarantine. Currently, four rooms are occupied.
2. Continuing weekly food distributions in coordination with the food banks and other related organizations.
3. Continuing to monitor and assess county childcare needs and capacity within the open facilities and inform the public of options.

PLANNING

1. Formalizing public disclosure request documentation response process and procedures.
2. Driving ICS 233 Action Items for completion.
3. Supporting Unified Command Meetings.
4. Onboarding new Planning Section Chief.
5. Developing Planning Section work processes for transition of personnel.
6. Continuing surge planning.
7. Continuing development of a remobilization plan for Unified Command.

REPORT PREPARED BY:
Situation Unit

REPORT APPROVED BY:
Incident Command

DATE:
05/19/20

TIME:
16:00