

# WHATCOM UNIFIED SITUATION REPORT



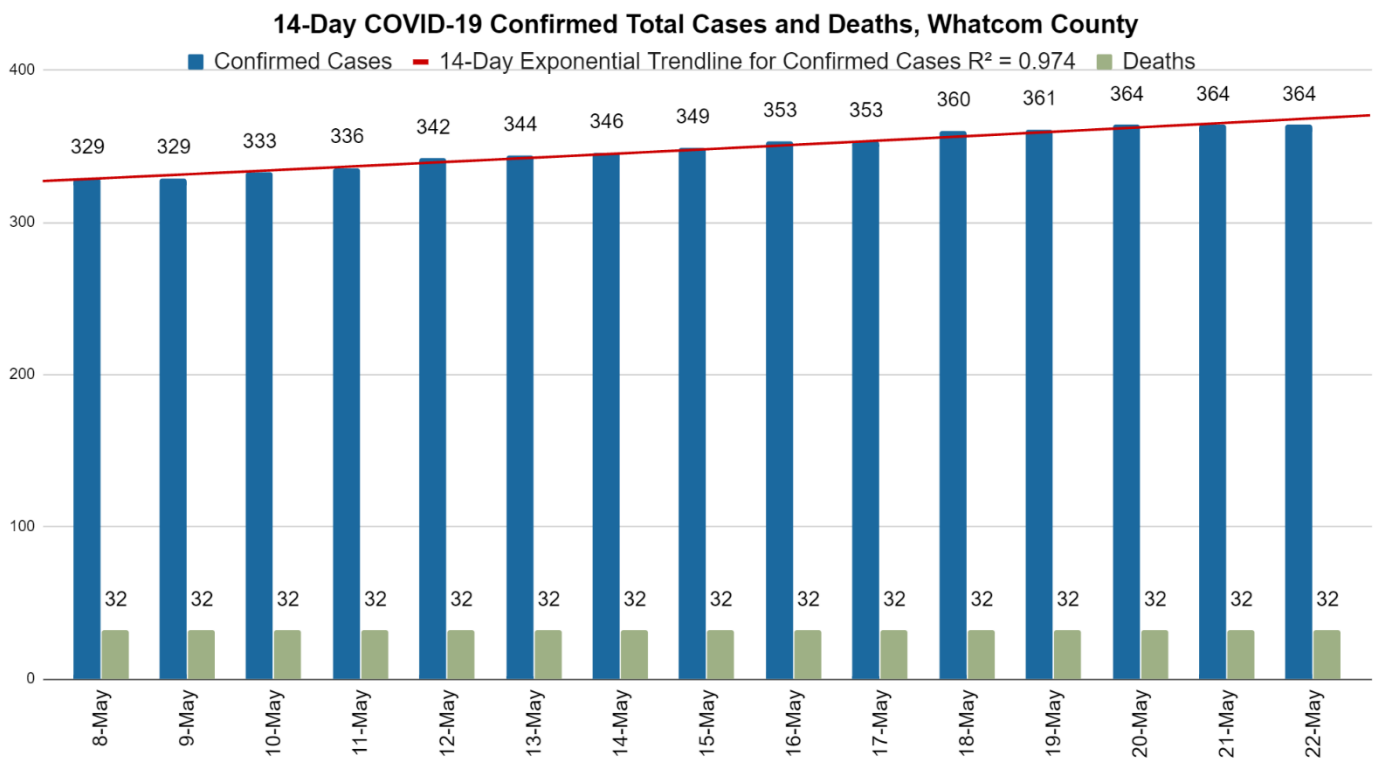
<b>REPORT #:</b> 20200522.1	<b>DATE:</b> 5/22/2020	<b>TIME:</b> 16:00
<b>INCIDENT NAME:</b> COVID-2019	<b>OPERATIONAL PERIOD:</b> 12	<b>MISSION NUMBER:</b> 20-0265

## WHATCOM UNIFIED INCIDENT COMMAND STATUS

<b>ACTIVATION:</b> Whatcom Unified Emergency Command Center	<b>ACTIVATION STATUS:</b> Partial	<b>HOURS OF OPERATION:</b> 8:00 am – 4:30 pm
--	--------------------------------------	---

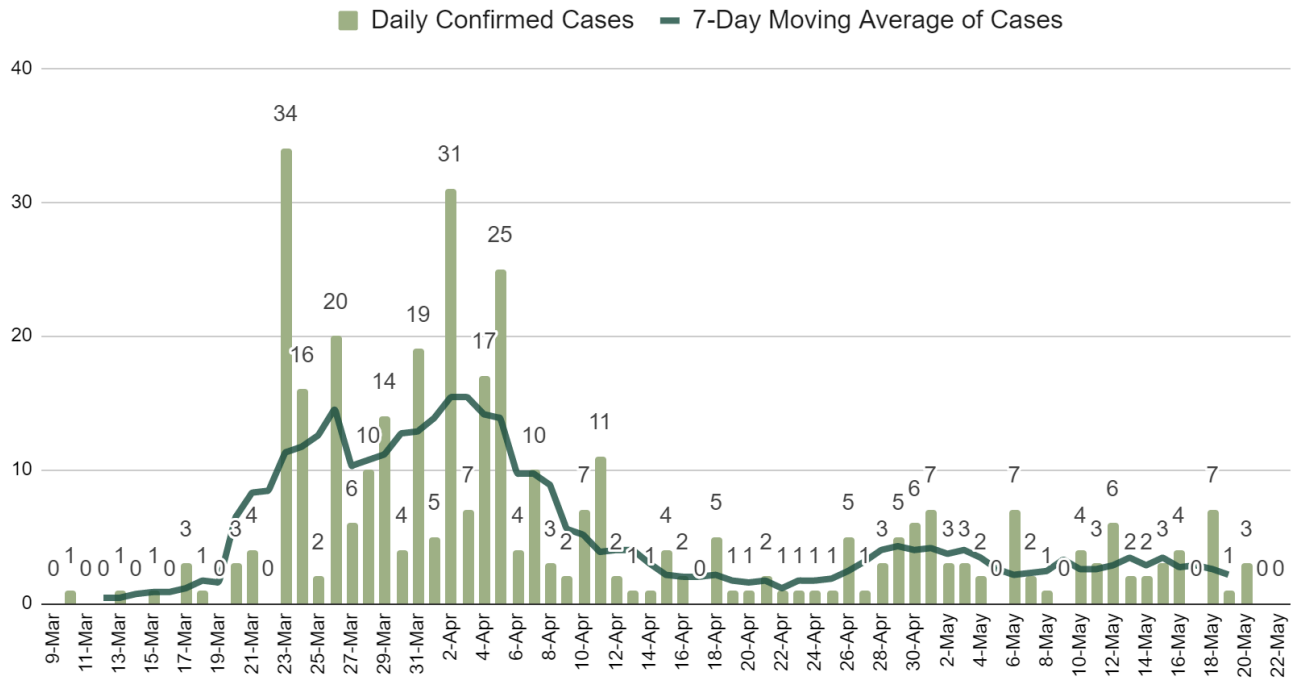
## GENERAL SITUATION

ICS 202

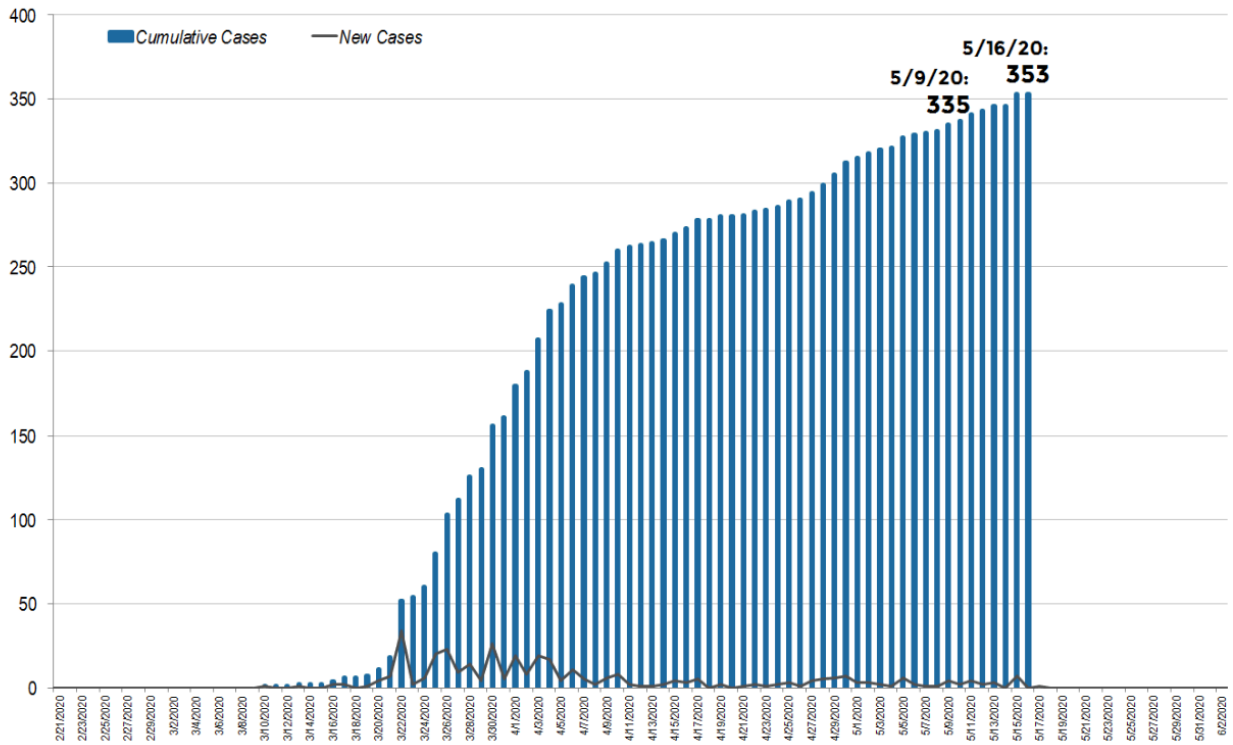


DATE	CONFIRMED CASES	DEATHS
05/22/2020	364	32
05/21/2020	364	32
05/20/2020	364	32
05/19/2020	361	32
05/18/2020	360	32

### COVID-19 Daily Confirmed Cases with 7-Day Moving Average, Whatcom County

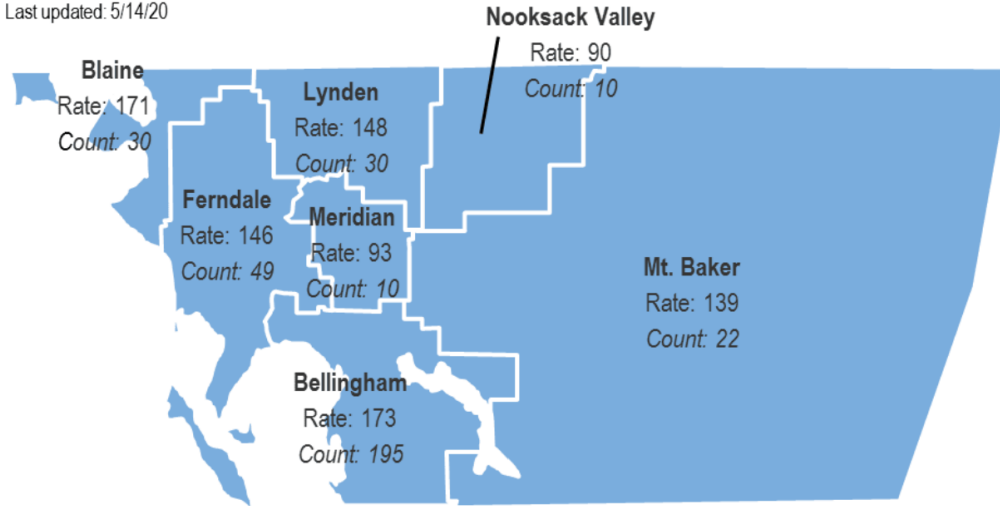


### Cumulative Count of Confirmed COVID-19 Cases in Whatcom County, by Day



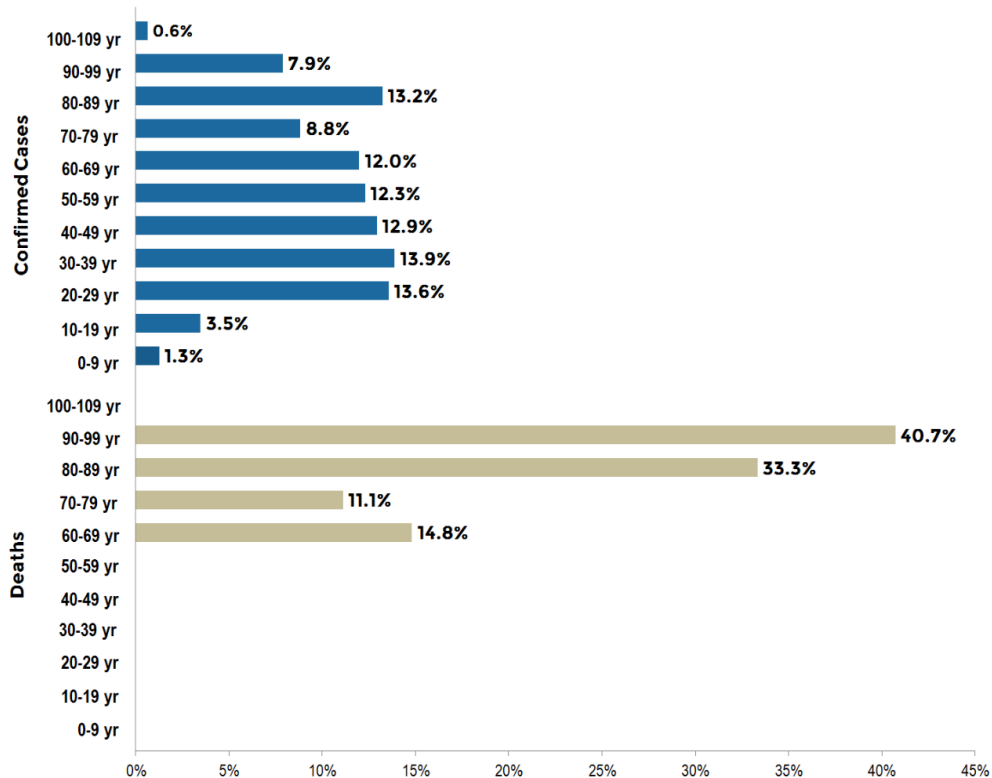
## Confirmed Cases of COVID-19 in Whatcom County, by School District

Last updated: 5/14/20



**Rate:** Confirmed cases of COVID-19 per 100,000 residents  
**Count:** Cumulative cases of COVID-19

## Confirmed Cases And Deaths, By Age Category



\*Source: Whatcom County Health Department: <https://www.whatcomcounty.us/3329/Novel-Coronavirus-COVID-19>

## INTELLIGENCE REPORT

Current PeaceHealth St. Joseph Medical Center data will be updated as it becomes available.

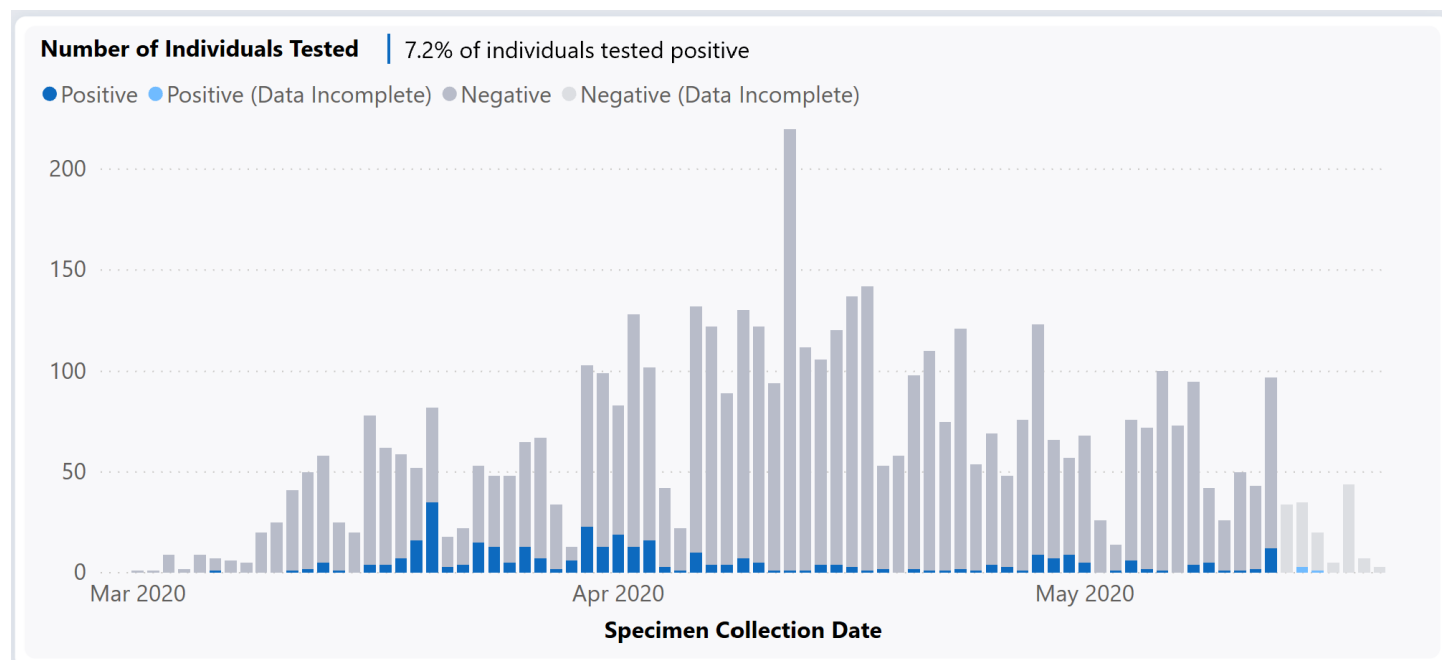
PeaceHealth St. Joseph Medical Center	05/14/20	05/13/20	05/12/20	05/11/20	05/10/20
Total Beds	232	232	232	232	232
Total Patients Admitted	165	167	166	162	162
Total Beds Available	67	65	66	70	70
Total Ventilators Available	43	43	43	43	43

\*Note: Capability to expand to 241 beds as needed.

\*\*Source: PeaceHealth St. Joseph Medical Center and Washington State Hospital Association as of May 15, 2020 at 12:30 p.m.

\*\*\*PeaceHealth St. Joseph Medical Center is one of multiple facilities that monitor and treat confirmed and/or suspected COVID cases in the County.

### WHATCOM COUNTY-NUMBER OF INDIVIDUALS TESTED

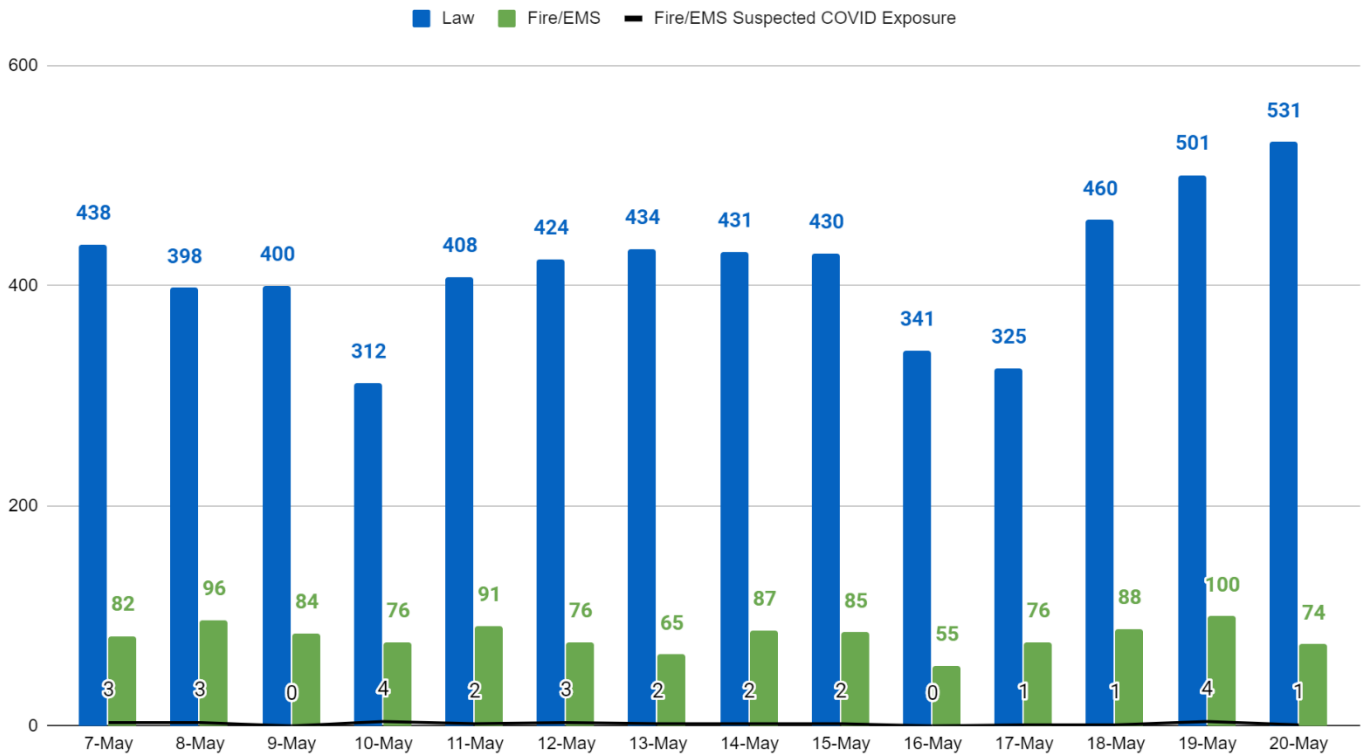


\*Whatcom County data as of May 20, 2020 11:59 PM

\*\*Source: Washington State Department of Health

<https://www.doh.wa.gov/Emergencies/NovelCoronavirusOutbreak2020COVID19/DataDashboard>

## 14-Day 911 Calls for Law and Fire/EMS with Fire/EMS Suspected COVID Exposure, Whatcom County



\*Note: A single incident can generate multiple 911 calls and incidents can occur without a 911 call.

\*\*Source: Whatcom County EMS; data as of May 21, 2020.

## COMMUNICATIONS

**Incident Objective 6:** Keep the public, stakeholders, and the media informed of response activities.

The Whatcom Unified Command **Joint Information Center (JIC)** updates and maintains the Whatcom COVID-19 website as the central repository for the most up to date information regarding COVID-19 for Whatcom County residents. Updates are continually made to report on current health data, government recommendations and orders, and media coverage. All information has been verified to come from reputable sources. The JIC coordinates with partner agencies throughout the State to maintain consistency when reporting information.

### Local Information (Coordinated through the JIC):

- WUC Whatcom COVID-19 website: <https://whatcomcovid.com/>
- Whatcom County Health Department website: <https://www.whatcomcounty.us/covid>
- Whatcom County News Flash: [www.co.whatcom.wa.us](http://www.co.whatcom.wa.us)
- [WUC Facebook](#)
- [WUC Twitter](#)
- [Whatcom County Health Department Facebook](#)

### State and Federal Information

- Governor Inslee's Proclamations: <https://www.governor.wa.gov/office-governor/official-actions/proclamations>

- Washington State Department of Health provides guidance on wearing cloth face coverings <https://www.doh.wa.gov/Portals/1/Documents/1600/coronavirus/ClothFacemasks.pdf>
- [Governor's phased approach](#)

#### JIC Updates

- WCHD Website [www.whatcomcounty.us/covid](http://www.whatcomcounty.us/covid)
  - Updated case numbers
- Whatcom Unified Command website [www.whatcomcovid.com](http://www.whatcomcovid.com)
  - Updated Sit Rep
- Social Media Posts
  - WCHD Facebook Updates
    - Coping with Grief
    - Share WUC FB Parks Q&A
    - Only hang out with people you live with
  - WUC Facebook Updates
    - Shared Lighthouse Mission Ministries video about the Drop-In Center
    - Cloth Face Covering Directive
- Other
  - Ongoing conversations with media/reporters

#### State and Local

- Bellingham Herald: [Leaving your home Friday, Whatcom County? Don't forget to wear a mask when in public.](#) - May 22, 2020
- Bellingham Herald: [Whatcom County COVID-19 Community Helpers host food and cleaning supplies drive on Saturday, May 23](#) - May 22, 2020
- Bellingham Herald: [Parks department to increase staff, parking barriers at popular Bellingham](#) - May 22, 2020

#### National

- Los Angeles Times: [During coronavirus, these workers must choose between paycheck or health](#) - May 22, 2020
- NPR: [570 Workers Test Positive for Coronavirus at North Carolina Poultry Plant](#) - May 21, 2020
- New York Times: [Trump Calls Houses of Worship 'Essential Services' and Urges Reopening](#)- May 22, 2020.

#### Upcoming and Continuing JIC Priorities

- Continue to prioritize messaging based on current Incident Objectives.
- We continue to work with Liaison to determine local COVID-19 call center needs and the best tool to address local phone inquiries.
- Continue to reinforce the importance of staying home and staying healthy for our community.
- Work with Liaison to develop a plan for distribution of communication materials for community groups.
- We are working on a more robust, strategic communications plan incorporating an equity focus throughout our messaging.
- Collect, summarize, and publish information about PPE distributed by WUC.
- Develop materials to explain planning process and communicate context of preparations.
- Greater outreach to farming communities.
- Help set expectations for progression of phased reopening.
- Communicate changes in Stay Home, Stay Healthy order as they are made public.
- Keep public updated on Public Health Advisory Board's Reopening Task Force.
- Publish Q&A video segments from local experts about Stay Home, Stay Healthy and transitioning through Governor Inslee's phased approach to reopenings.
- Provided further encouragement and direction on mask use and information about masks.

## WHATCOM UNIFIED COMMAND INFORMATION

### INCIDENT OBJECTIVES: Operational Period 12

1. Anticipate and develop plans to address potential second peak of COVID-19 infections.
2. Prevent and mitigate the spread of COVID-19.
3. Provide for the most vulnerable members of the community.
4. Ensure adequacy of First Responder/Healthcare personnel and equipment/supplies.
5. Enable continuity of Essential Services.
6. Keep the public, stakeholders and the media informed of response activities.
7. Manage a coordinated interagency response effort that reflects the makeup of Unified Command.

## SOURCES & RELEVANT SITES

IAP Software

WADOH Daily Epi Report

WADOH Map: <https://www.arcgis.com/apps/opsdashboard/index.html#/3614241b1c2b4e519ae1cf52e2c3d560>

Whatcom County Health Department <http://www.whatcomcounty.us/3329/Novel-Coronavirus-COVID-19#case>

Whatcom County EMS

Washington State Hospital Association- Hospital Supply Tracker

Whatcom County Health Department Situation Reports

Washington: <https://www.doh.wa.gov/emergencies/coronavirus>

British Columbia: <https://www.canada.ca/en/public-health/services/diseases/2019-novel-coronavirus-infection.html>

Alaska: <http://dhss.alaska.gov/dph/Epi/id/Pages/COVID-19/monitoring.aspx>

California: <https://www.cdph.ca.gov/Programs/CID/DCDC/Pages/Immunization/ncov2019.aspx>

Hawaii: <https://hawaii-covid19.com/>

Idaho: <https://coronavirus.idaho.gov/>

Oregon: <https://govstatus.egov.com/OR-OHA-COVID-19>

CDC <https://www.cdc.gov/coronavirus/2019-ncov/cases-updates/cases-in-us.html>

Global: <https://coronavirus.jhu.edu/map.html>

## SECTION UPDATES

### LOGISTICS

1. Supporting today's food box distribution to over 900 homes in Whatcom County.
2. Continuing to provide support and supplies to Byron Avenue I/Q Facility.
3. Continuing to research and identify additional I/Q facilities for surge planning.
4. Continuing to research and compile sourcing options for PPE and connecting customers directly to distributors where feasible.
5. Utilizing tool to project future PPE needs for first responders.
6. Continuing to support Drop-In Center.

### OPERATIONS

1. Assessing need for face coverings for vulnerable populations in Whatcom County, and determining a plan for addressing that need.

2. Supporting today's food box distribution to over 900 homes in Whatcom County.
3. Continuing operations of the Byron Avenue I/Q Facility with the admittance of community members needing isolation/quarantine. Currently, five rooms are occupied.
4. Conducting site research and planning for a new, temporary Drop-In Center for transitioning from current location at Bellingham High.
5. Continuing to monitor and assess county childcare needs and capacity within the open facilities and inform the public of options.

**PLANNING**

1. Driving ICS 233 Action Items for completion.
2. Supporting Unified Command Meetings.
3. Continuing development of Planning Section work processes for transition of personnel and facilitating Planning Chief rotation.
4. Continuing surge planning.
5. Continuing development of a remobilization plan for Unified Command.

<b>REPORT PREPARED BY:</b> Situation Unit	<b>REPORT APPROVED BY:</b> Incident Command	<b>DATE:</b> 05/22/20	<b>TIME:</b> 16:00
--	--	--------------------------	-----------------------