

Project Discussion

Middletown Area School District



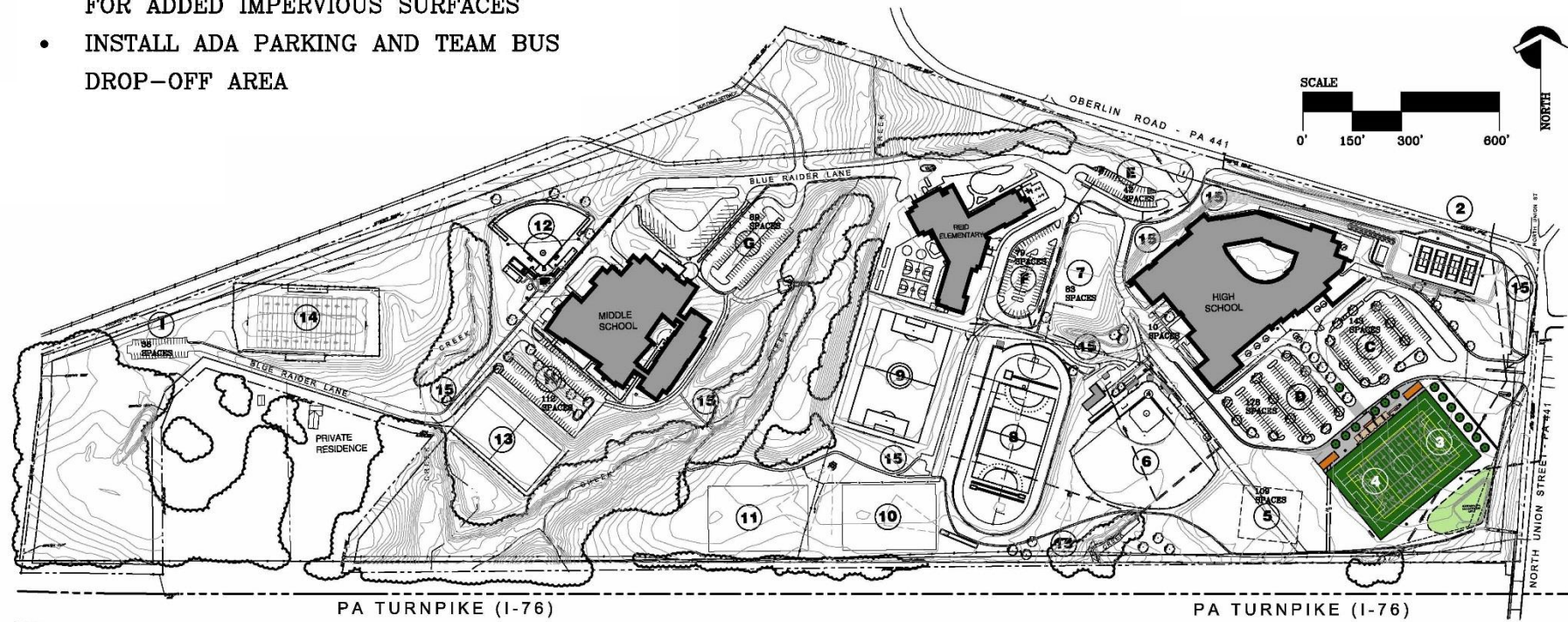
New Synthetic Turf Field and Athletic Amenities Project

Middletown Area School District

RECOMMENDATIONS

FIELDS 3 AND 4:

- REPLACE FIELDS WITH NEW SYNTHETIC TURF WITH SOCCER, FIELD HOCKEY, AND NON-VARSITY FOOTBALL FIELD
- INSTALL NEW LED FIELD LIGHTING
- CONSTRUCT NEW SUPPORT BUILDING
- CONSTRUCT NEW SPECTATOR SEATING (500) WITH SMALL PRESS BOX
- EXPAND EXISTING STORMWATER MANAGEMENT FOR ADDED IMPERVIOUS SURFACES
- INSTALL ADA PARKING AND TEAM BUS DROP-OFF AREA



CONCEPT FIVE

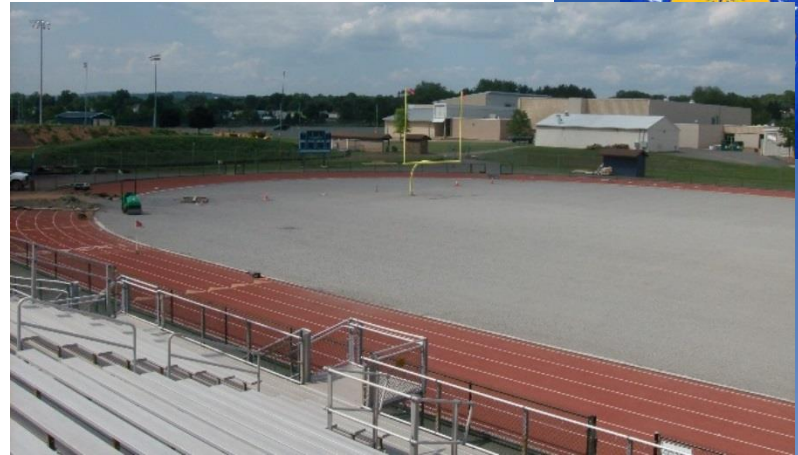
28 MARCH 2019

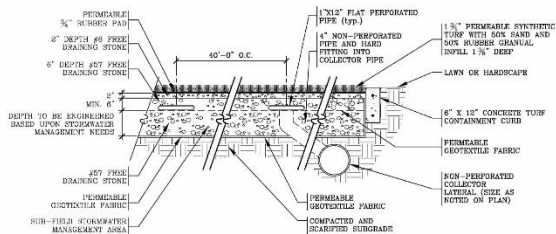
Middletown Area School District Fields 3/4 – Proposed Synthetic Turf Field



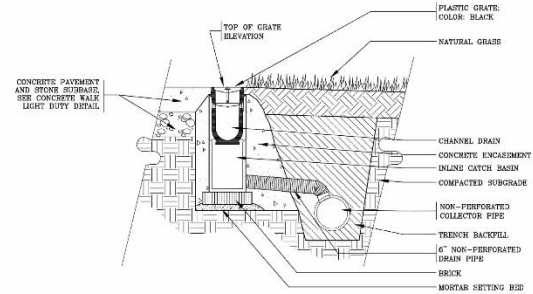
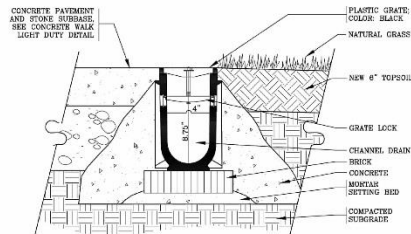
COMPONENTS

Synthetic Turf Playing Surface





- NOTES:
- PERMEABLE GEOTEXTILE FABRIC MUST CONSIST OF POLYPROPYLENE FIBERS AND MEET THE FOLLOWING SPECIFICATIONS (ASTM CLASS 1 OR CLASS 2 GEOTEXTILE IS RECOMMENDED):
 - GRAB TENSILE STRENGTH (ASTM-D4832) > OR = 120 LBS
 - MULLEN BURST STRENGTH (ASTM-D3785) > OR = 525 PSI
 - FLOW RATE (ASTM-D3481) BE CAL/IN/FT
 - NO RESISTANCE AFTER AND BEFORE (ASTM-D4832) > OR = 70%
 - MINIMUM OVERLAP OF SEAMS FOR GEOTEXTILE FABRIC SHALL BE 16 INCHES.
 - STONE WHICH MUST BE UNIFORMLY GRADED, COURSED, CLEAN-WASHED STONE. "CLEAN-WASHED" IS DEFINED AS HAVING LESS THAN 0.5% WASH LOSS, BY MASS, WHEN TESTED PER AMERICAN ASSOCIATION OF STATE HIGHWAY AND TRANSPORTATION OFFICIALS (AASHTO) T-11 WASH LOSS TEST. AASHTO NO. 3 AND NO. 57 STONE CAN MEET THIS SPECIFICATION.



SYNTHETIC FIELD UNDERDRAINAGE CONCEPT

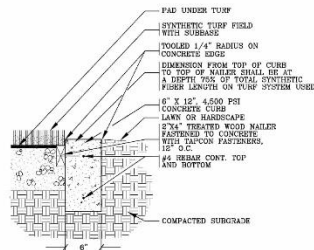
NOT TO SCALE

CHANNEL DRAIN

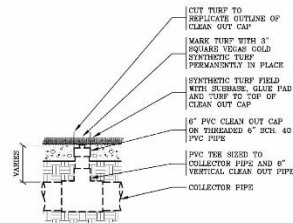
NOT TO SCALE

CHANNEL DRAIN & INLINE CATCH BASIN

NOT TO SCALE

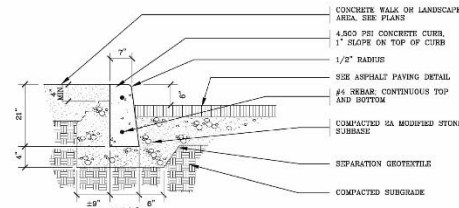


- NOTES:
- ALL TREATED WOOD TO BE NON-CCA, TOP OF TURF INFILL TO BE FILLER WITH TOP OF CONCRETE CURB.
 - EXPANSION JOINTS TO BE INSTALLED AT INTERVALS NOT TO EXCEED 160'. SAWCUT CONTROL JOINTS SHALL OCCUR EVERY 20'.



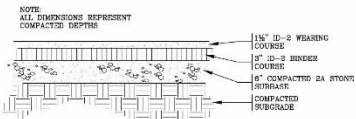
DRAINAGE OBSERVATION PORTAL IN SYNTHETIC TURF

NOT TO SCALE



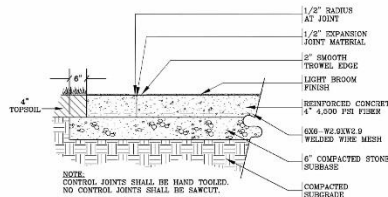
CONCRETE CURB

NOT TO SCALE



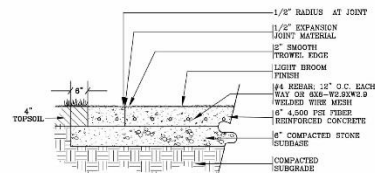
ASPHALT PAVING

NOT TO SCALE



CONCRETE WALK - LIGHT DUTY

NOT TO SCALE



CONCRETE WALK - HEAVY DUTY

NOT TO SCALE

LAND ARCHITECT

architerra, pc

202 North Main Street • Cooperstown, Pennsylvania 18043

CONSULTANT

EVI
EVANS ENGINEERING, INC.
CONSULTING ENGINEERS
1792 Old Post Road, Berwyn, PA 17004 • (717) 841-6288
Fax: (717) 841-1000 • evans@evanseng.com

PROJECT TITLE

MIDDLETOWN AREA SCHOOL DISTRICT
NEW SYNTHETIC TURF FIELD AND ATHLETIC AMENITIES PROJECT

LOWER SWATARA TOWNSHIP, DAUPHIN COUNTY, PENNSYLVANIA

ARCHITERRA PROJECT NUMBER 1625.00

DATE

14 MARCH 2019

REVISIONS

SHEET TITLE

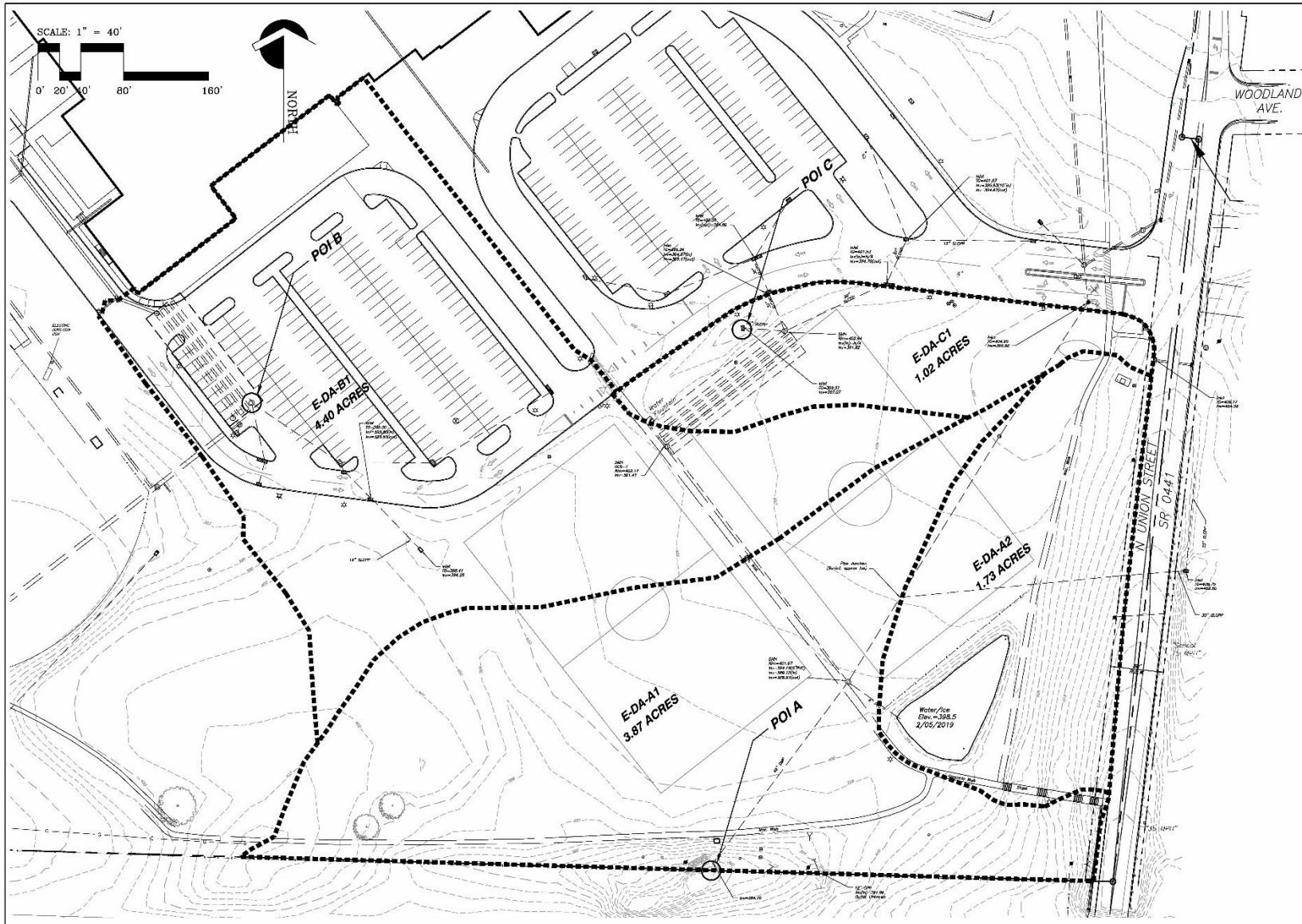
TYPICAL DETAILS

SHEET NUMBER

SK-4

© architerra, pc

2019



LAND ARCHITECT

architerra, pc.

205 North Main Street • Chambersburg, Pennsylvania 17004

CONSULTANT

EEI
EVANS ENGINEERING, INC.
CONSULTING ENGINEERS
 1785 Old Post Road, Chambersburg, PA 17105 • (717) 641-6286
 Fax: (717) 641-1089 • info@evanseng.com

PROJECT TITLE

**MIDDLETOWN
 AREA SCHOOL
 DISTRICT**

**NEW SYNTHETIC
 TURF FIELD AND
 ATHLETIC
 AMENITIES PROJECT**

LOWER SWATARA TOWNSHIP,
 DAUPHIN COUNTY,
 PENNSYLVANIA

ARCHITERRA PROJECT NUMBER 1603.06

DATE

14 MARCH 2019

REVISIONS

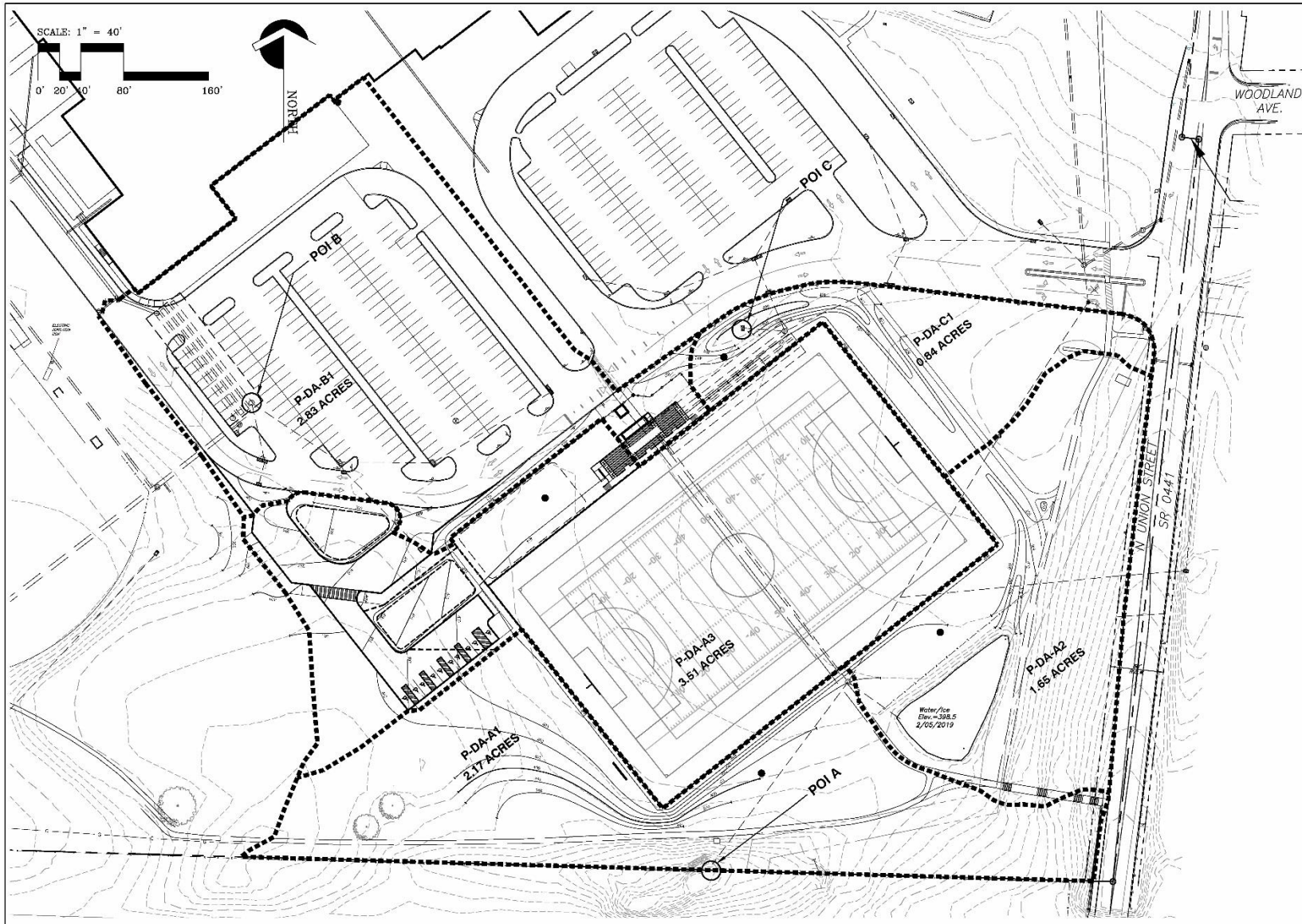
SHEET TITLE

**EXISTING
 DRAINAGE
 AREA PLAN**

SHEET NUMBER

SK-5

© **architerra, pc.** 2019.



LAND ARCHITECT

architerra, pc.

205 North Main Street • Chambersburg, Pennsylvania 17004

CONSULTANT

EEI
EVANS ENGINEERING, INC.
CONSULTING ENGINEERS
 1785 Old Post Road, Chambersburg, PA 17010 • (717) 641-6286
 Fax: (717) 641-1088 • info@eeiinc.com

PROJECT TITLE

**MIDDLETOWN
 AREA SCHOOL
 DISTRICT**

**NEW SYNTHETIC
 TURF FIELD AND
 ATHLETIC
 AMENITIES PROJECT**

LOWER SWATARA TOWNSHIP,
 DAUPHIN COUNTY,
 PENNSYLVANIA

ARCHITERRA PROJECT NUMBER 1603.06

DATE

14 MARCH 2019

REVISIONS

SHEET TITLE

**PROPOSED
 DRAINAGE
 AREA PLAN**

SHEET NUMBER

SK-6

© architerra, pc 2019

ANTICIPATED PROJECT SCHEDULE

Obtain Permits and Approvals	Summer 2019
Public Bid	Autumn 2019
Begin Construction	Winter 2020
Finish Construction	Summer 2020





LAND ARCHITECT

architerra, pc.

205 North Main Street Coopersburg, Pennsylvania 18036

PROJECT TITLE

**MIDDLETOWN
AREA SCHOOL
DISTRICT**

**NEW SYNTHETIC
TURF FIELD AND
ATHLETIC
AMENITIES PROJECT**

LOWER SWATARA TOWNSHIP,
DAUPHIN COUNTY,
PENNSYLVANIA

ARCHITERRA PROJECT NUMBER 1833.00

DATE

25 MARCH 2019

REVISIONS

**FIELD
GRAPHIC
OPTIONS**

SHEET TITLE

**CONCEPT
ONE**

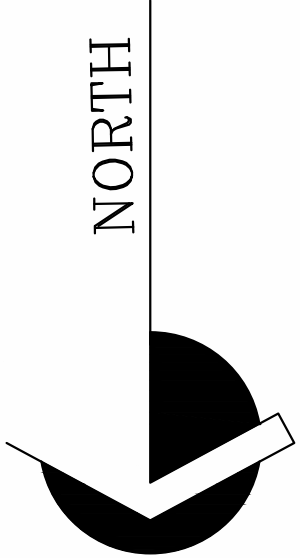
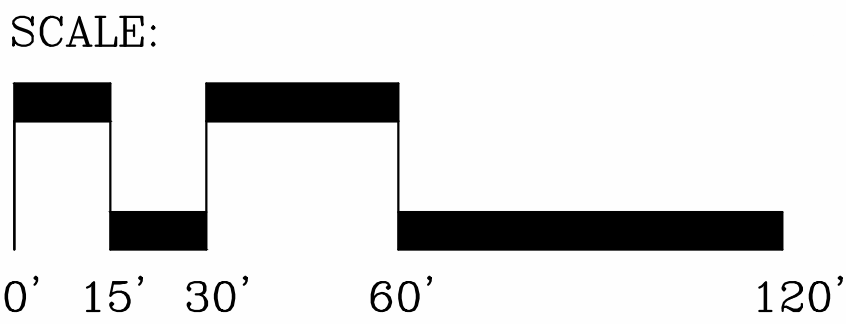
SHEET NUMBER

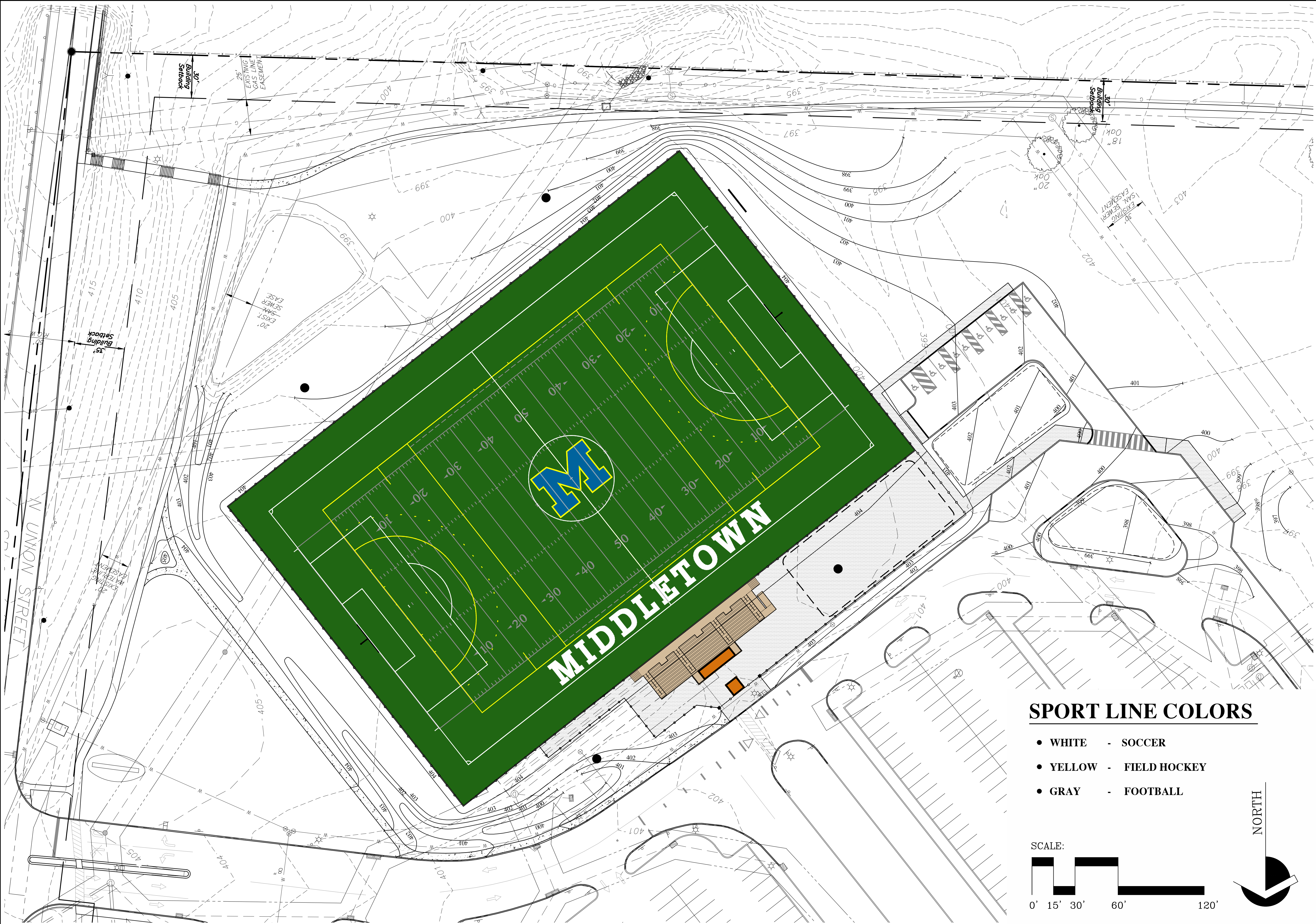
C-1

© architerra, pc. 2019

SPORT LINE COLORS

- WHITE - SOCCER
- YELLOW - FIELD HOCKEY
- GRAY - FOOTBALL





LAND ARCHITECT

architerra, pc.

205 North Main Street Coopersburg, Pennsylvania 18036

PROJECT TITLE

MIDDLETOWN
AREA SCHOOL
DISTRICT

NEW SYNTHETIC
TURF FIELD AND
ATHLETIC
AMENITIES PROJECT

LOWER SWATARA TOWNSHIP,
DAUPHIN COUNTY,
PENNSYLVANIA

ARCHITERRA PROJECT NUMBER 1833.00

DATE

25 MARCH 2019

REVISIONS

FIELD
GRAPHIC
OPTIONS

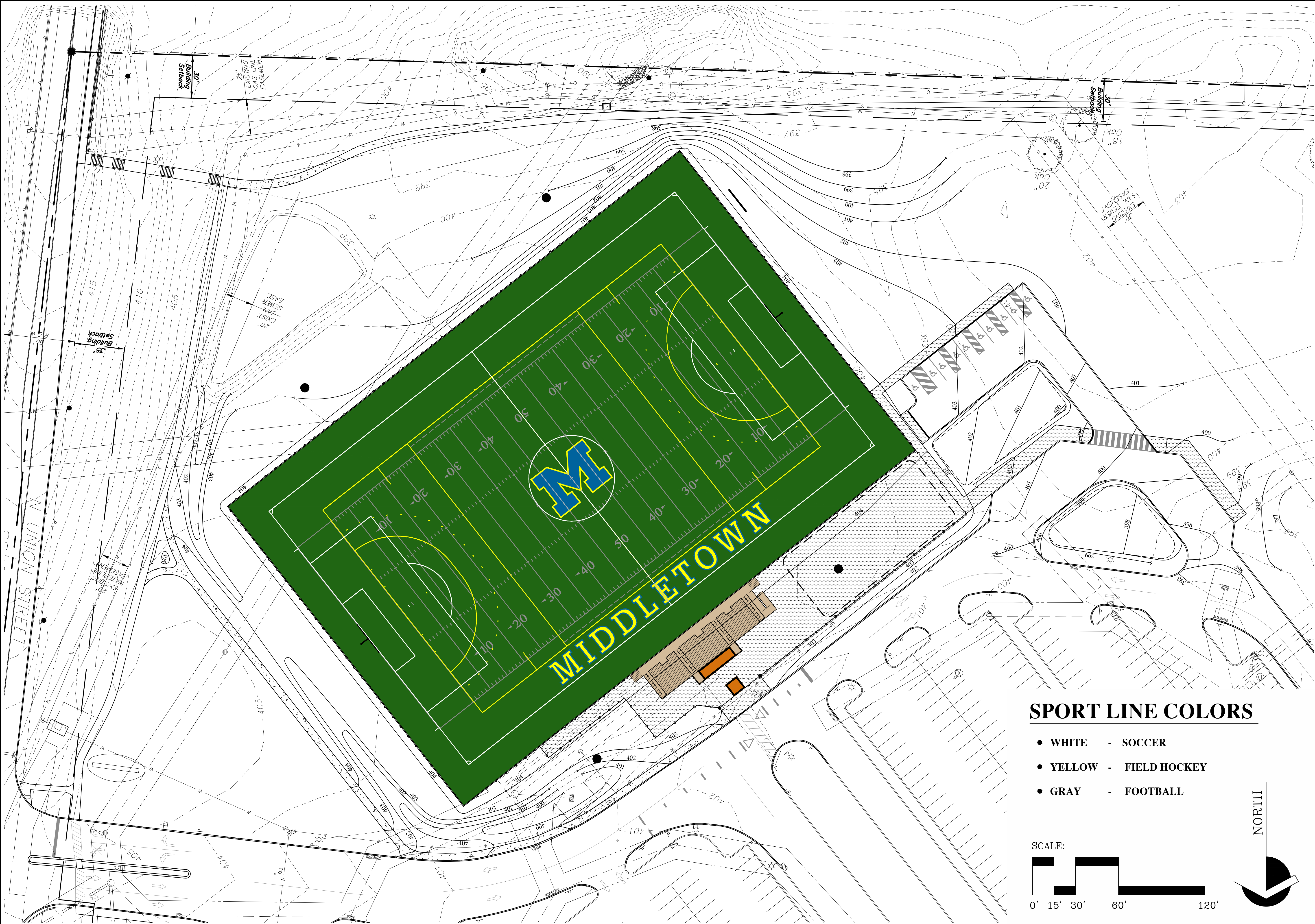
SHEET TITLE

CONCEPT
TWO

SHEET NUMBER

C-2

© architerra, pc. 2019



PROJECT TITLE

**MIDDLETOWN
AREA SCHOOL
DISTRICT**

**NEW SYNTHETIC
TURF FIELD AND
ATHLETIC
AMENITIES PROJECT**

LOWER SWATARA TOWNSHIP,
DAUPHIN COUNTY,
PENNSYLVANIA

ARCHITERRA PROJECT NUMBER 1833.00

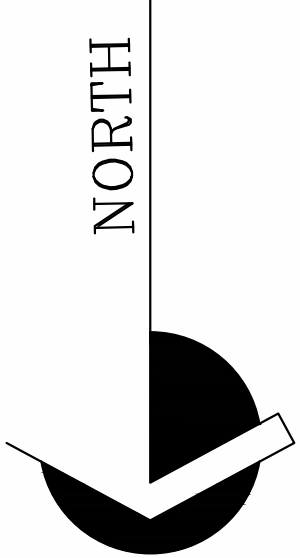
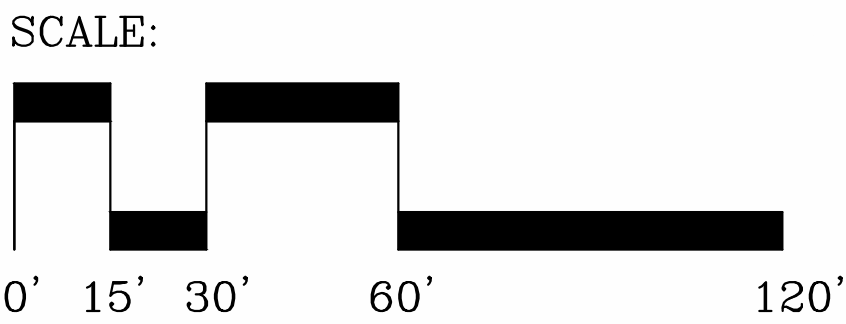
DATE

25 MARCH 2019

REVISIONS	

SPORT LINE COLORS

- WHITE - SOCCER
- YELLOW - FIELD HOCKEY
- GRAY - FOOTBALL



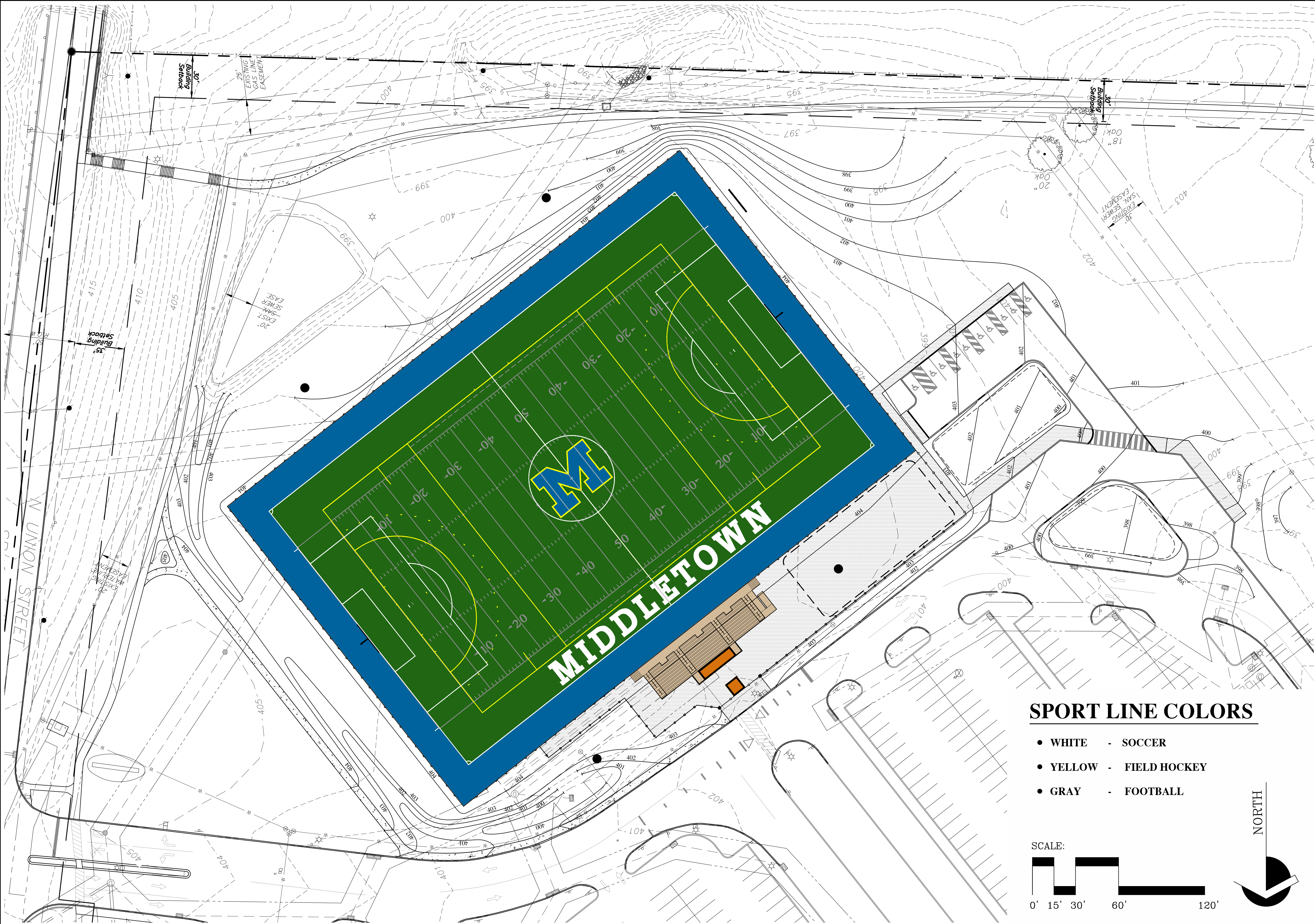
**FIELD
GRAPHIC
OPTIONS**

SHEET TITLE

**CONCEPT
THREE**

SHEET NUMBER

C-3



LAND ARCHITECT

architerra, pc.

205 North Main Street Coopersburg, Pennsylvania 18036

PROJECT TITLE

MIDDLETOWN
AREA SCHOOL
DISTRICT

NEW SYNTHETIC
TURF FIELD AND
ATHLETIC
AMENITIES PROJECT

LOWER SWATARA TOWNSHIP,
DAUPHIN COUNTY,
PENNSYLVANIA

ARCHITERRA PROJECT NUMBER 1833.00

DATE

25 MARCH 2019

REVISIONS

FIELD
GRAPHIC
OPTIONS

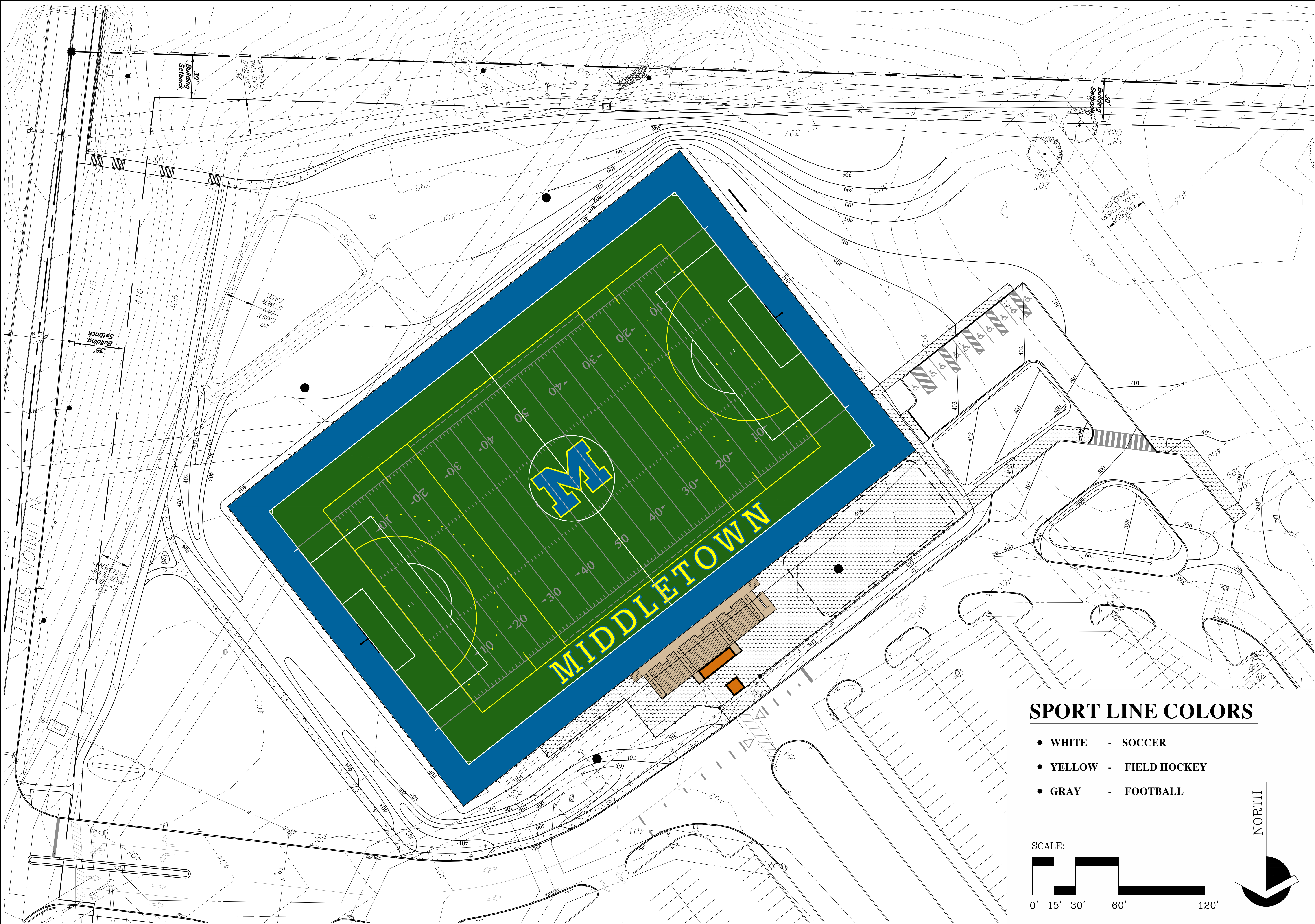
SHEET TITLE

CONCEPT
FOUR

SHEET NUMBER

C-4

© architerra, pc. 2019



LAND ARCHITECT

architerra, pc.

205 North Main Street Coopersburg, Pennsylvania 18036

PROJECT TITLE

MIDDLETOWN
AREA SCHOOL
DISTRICT

NEW SYNTHETIC
TURF FIELD AND
ATHLETIC
AMENITIES PROJECT

LOWER SWATARA TOWNSHIP,
DAUPHIN COUNTY,
PENNSYLVANIA

ARCHITERRA PROJECT NUMBER 1833.00

DATE

25 MARCH 2019

REVISIONS

FIELD
GRAPHIC
OPTIONS

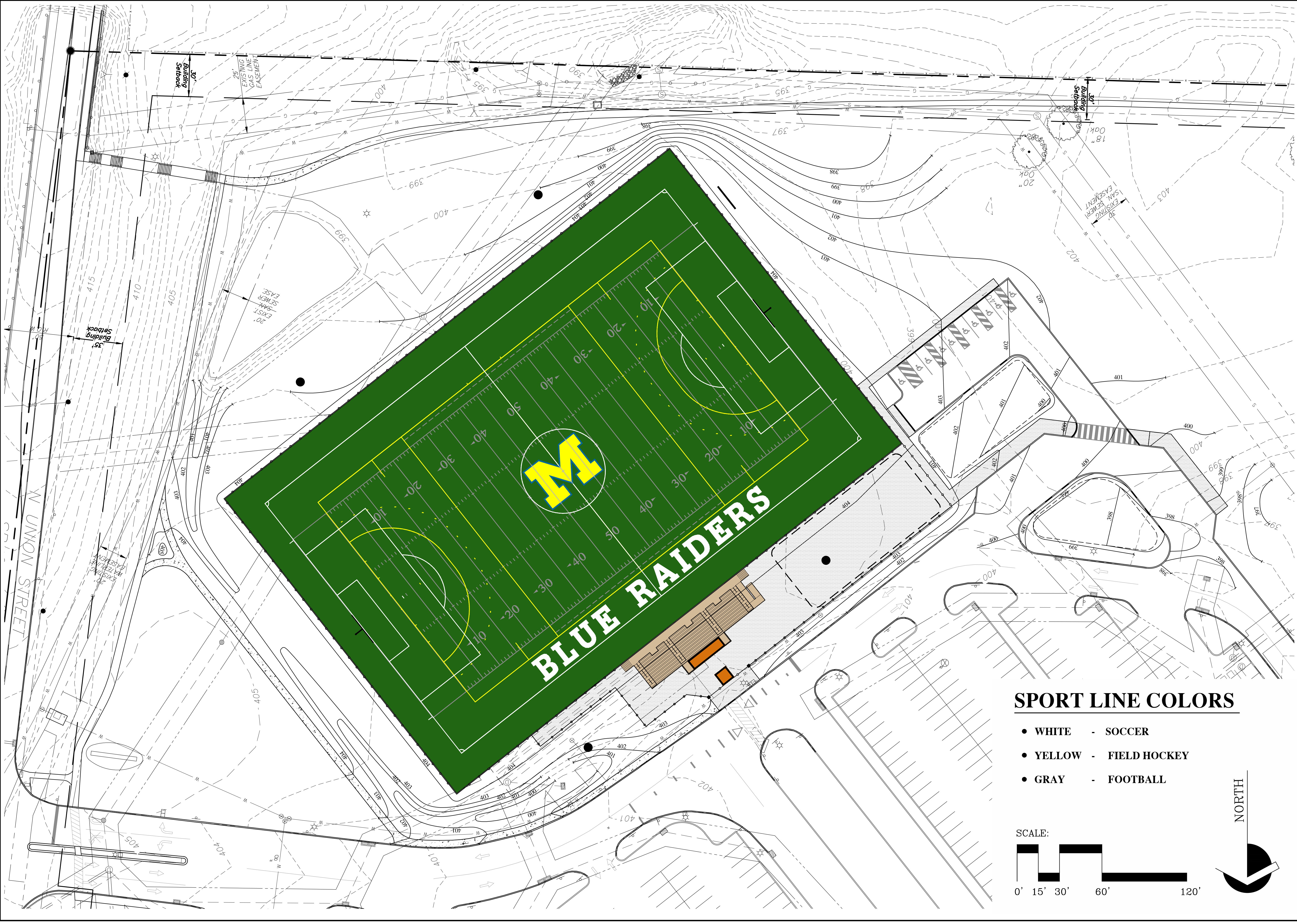
SHEET TITLE

CONCEPT
FIVE

SHEET NUMBER

C-5

© architerra, pc. 2019



LAND ARCHITECT

architerra, pc.

205 North Main Street Coopersburg, Pennsylvania 18036

PROJECT TITLE

MIDDLETOWN
AREA SCHOOL
DISTRICT

NEW SYNTHETIC
TURF FIELD AND
ATHLETIC
AMENITIES PROJECT

LOWER SWATARA TOWNSHIP,
DAUPHIN COUNTY,
PENNSYLVANIA

ARCHITERRA PROJECT NUMBER 1833.00

DATE

25 MARCH 2019

REVISIONS

FIELD
GRAPHIC
OPTIONS

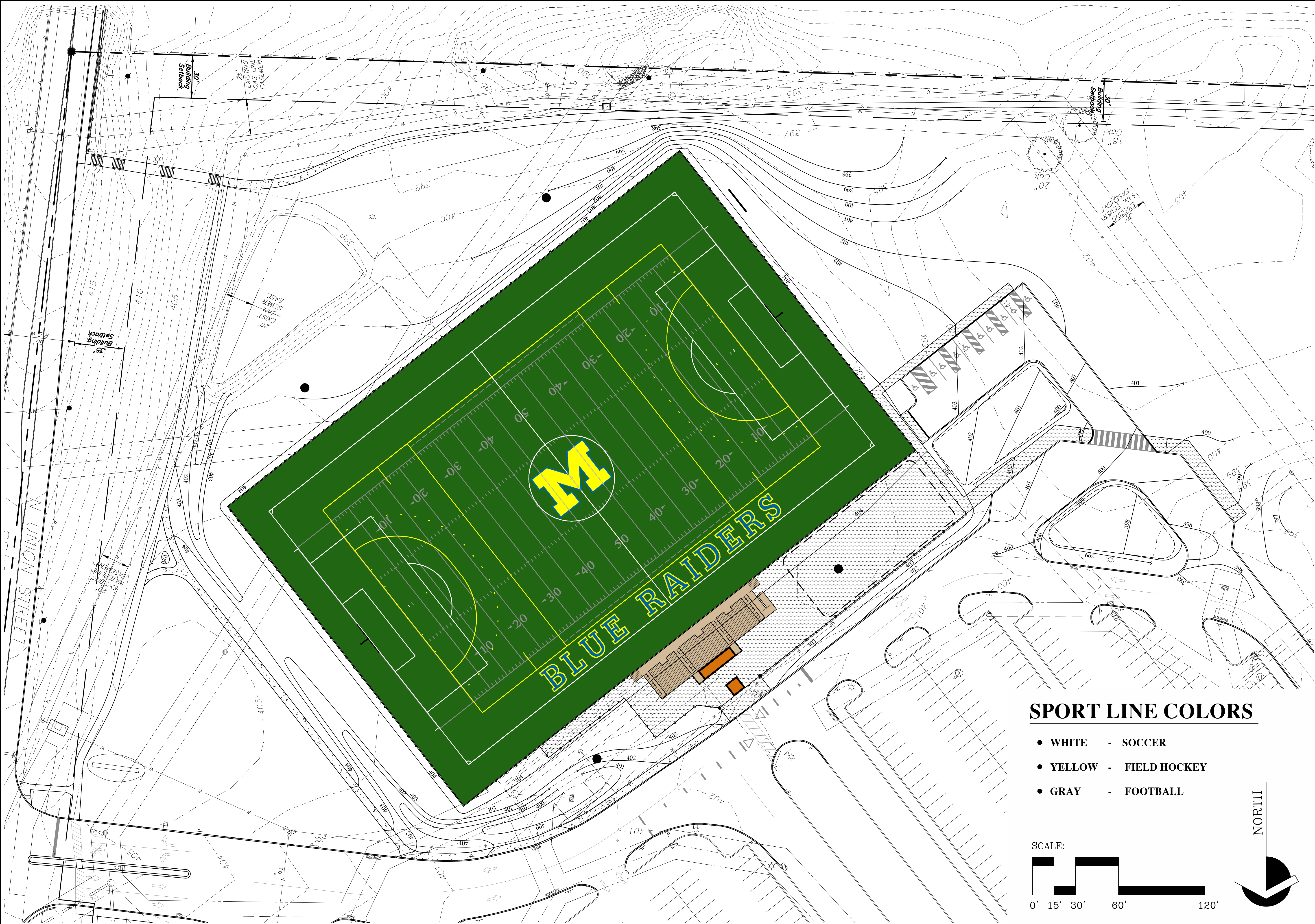
SHEET TITLE

CONCEPT
SIX

SHEET NUMBER

C-6

© architerra, pc. 2019



LAND ARCHITECT

architerra, pc.

205 North Main Street Coopersburg, Pennsylvania 18036

PROJECT TITLE

MIDDLETOWN
AREA SCHOOL
DISTRICT

NEW SYNTHETIC
TURF FIELD AND
ATHLETIC
AMENITIES PROJECT

LOWER SWATARA TOWNSHIP,
DAUPHIN COUNTY,
PENNSYLVANIA

ARCHITERRA PROJECT NUMBER 1833.00

DATE

25 MARCH 2019

REVISIONS

FIELD
GRAPHIC
OPTIONS

SHEET TITLE

CONCEPT
SEVEN

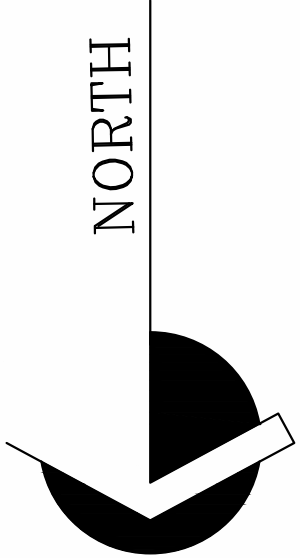
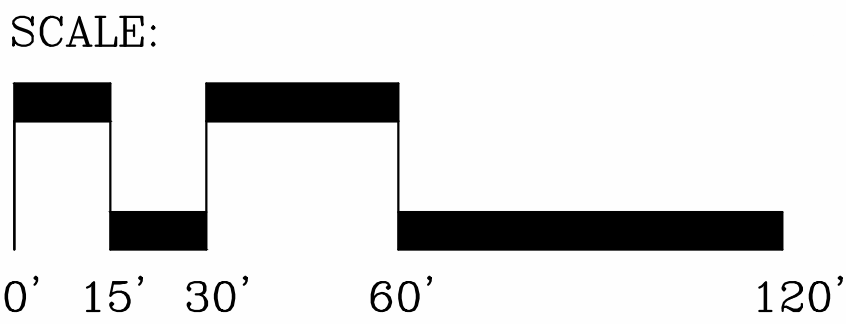
SHEET NUMBER

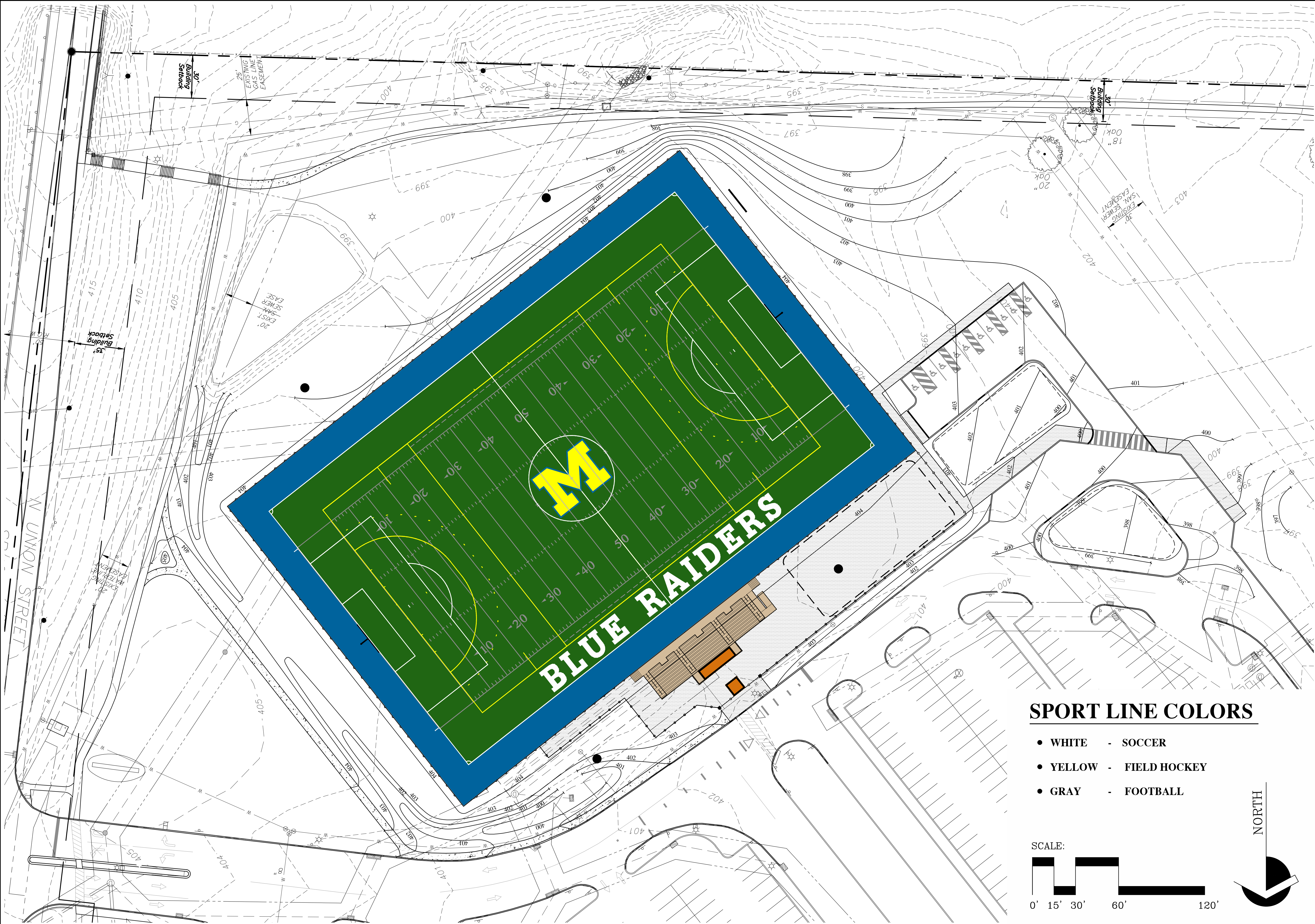
C-7

© architerra, pc. 2019

SPORT LINE COLORS

- WHITE - SOCCER
- YELLOW - FIELD HOCKEY
- GRAY - FOOTBALL





LAND ARCHITECT

architerra, pc.

205 North Main Street Coopersburg, Pennsylvania 18036

PROJECT TITLE

MIDDLETOWN
AREA SCHOOL
DISTRICT

NEW SYNTHETIC
TURF FIELD AND
ATHLETIC
AMENITIES PROJECT

LOWER SWATARA TOWNSHIP,
DAUPHIN COUNTY,
PENNSYLVANIA

ARCHITERRA PROJECT NUMBER 1833.00

DATE

25 MARCH 2019

REVISIONS

FIELD
GRAPHIC
OPTIONS

SHEET TITLE

CONCEPT
EIGHT

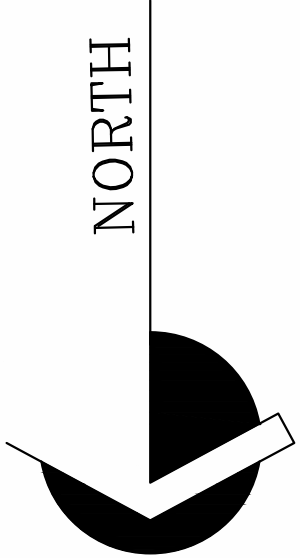
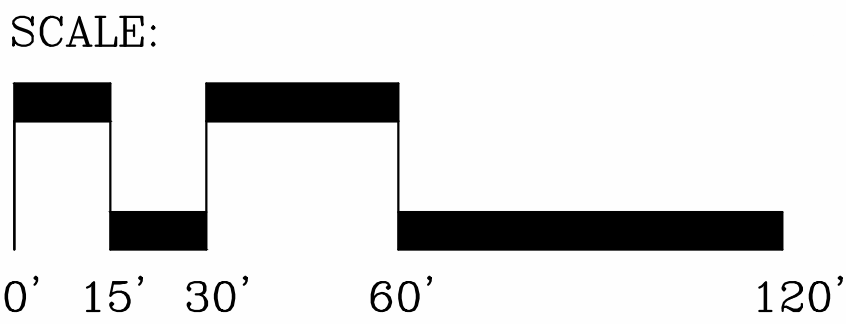
SHEET NUMBER

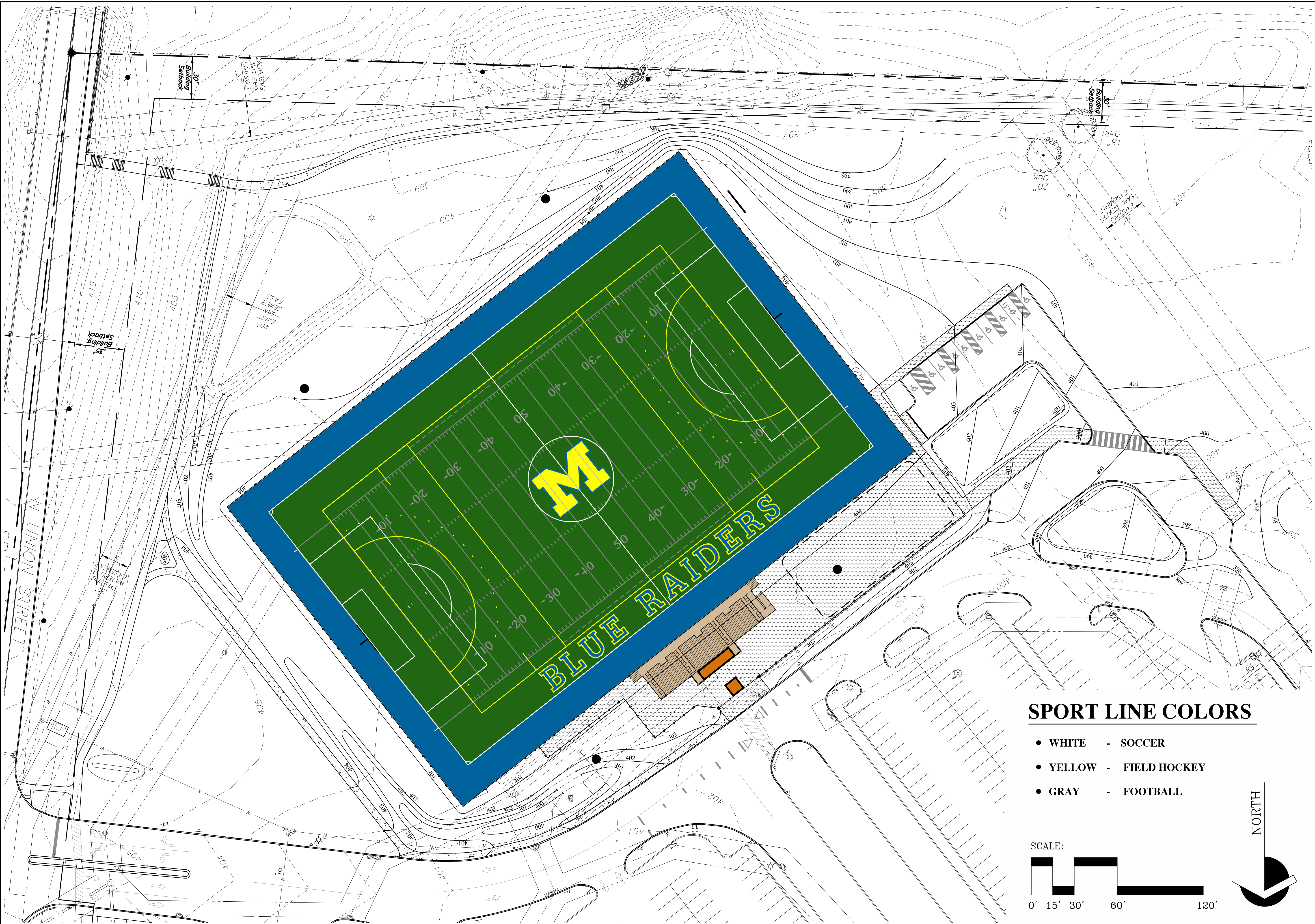
C-8

© architerra, pc. 2019

SPORT LINE COLORS

- WHITE - SOCCER
- YELLOW - FIELD HOCKEY
- GRAY - FOOTBALL





PROJECT TITLE

**MIDDLETOWN
AREA SCHOOL
DISTRICT**

**NEW SYNTHETIC
TURF FIELD AND
ATHLETIC
AMENITIES PROJECT**

LOWER SWATARA TOWNSHIP,
DAUPHIN COUNTY,
PENNSYLVANIA

ARCHITERRA PROJECT NUMBER 1833.00

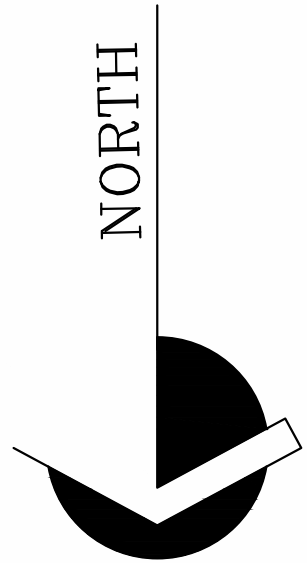
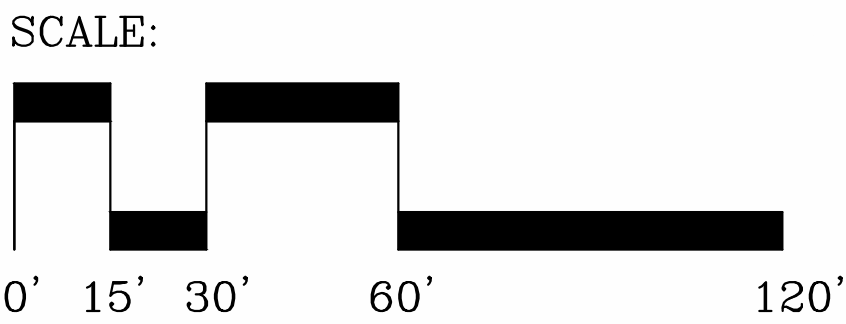
DATE

25 MARCH 2019

REVISIONS	

SPORT LINE COLORS

- WHITE - SOCCER
- YELLOW - FIELD HOCKEY
- GRAY - FOOTBALL



**FIELD
GRAPHIC
OPTIONS**

SHEET TITLE

**CONCEPT
NINE**

SHEET NUMBER

C-9

ARCHITERRA PROJECT NUMBER 1833.00

